

Nordic CCM Market Report: 2023 Week 22

*For more information on the EPR and other published data consult the EPR Handbook

General Remark

This week sees an overall change for the Nordic CCR of 1.80 M€, a change of 6.31 M€ on the Hansa/Baltic border, and a change of 2.15 M€ for the external areas, resulting in a change of 10.26 M€ for the entire SDAC area.

At the beginning of the week, the consumer surplus was positive, while the producer surplus was negative. However, this changed halfway through the week, where the PS turned positive and the CS turned negative. FB better manages to relieve bottlenecks and create more similar prices. Thus, when the prices are very low on the continent, the Nordic area will also get lower prices than in NTC, which was the case for the first half of the week.

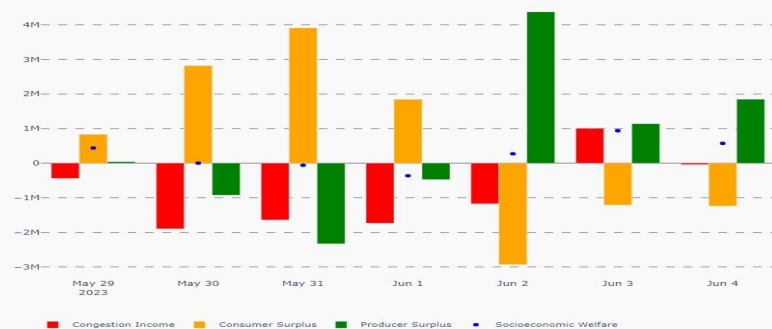
We also see three days in a row from May 30 where the Nordic SEW is negative. However, the overall SEW for the whole market is still positive. FB thus manages to move some SEW from the Nordics to the continent.

The IVA provision on Monday was due to a mistake on input data on Swepol, and Wednesday and Saturday was due to wrong SE1-FI values.

Nordic CCR Socio-economic Welfare Result (M€)

	DK	NO	SE	FI	Sum
Congestion Income	1.39	2.96	-10.48	0.22	-5.92
Consumer Surplus	2.13	0.51	4.27	-2.87	4.04
Producer Surplus	-2.61	0.75	2.04	3.50	3.68
Sum	0.91	4.21	-4.17	0.85	1.80

Daily Nordic Socio-economic Welfare (M€)



Socio-economic Welfare change per Nordic BZ (M€)



Data Quality

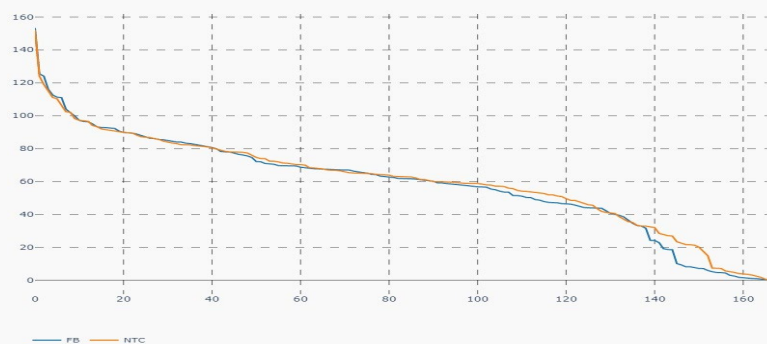
	29/05 Mon	30/05 Tue	31/05 Wed	01/06 Thu	02/06 Fri	03/06 Sat	04/06 Sun
Substituted IGMs	4	0	16	8	11	0	0
IVA Provision	1	0	1	0	0	1	0
Accepted Domain	100%	100%	100%	100%	100%	100%	100%

*IVAs can be viewed by JAO under validation reductions

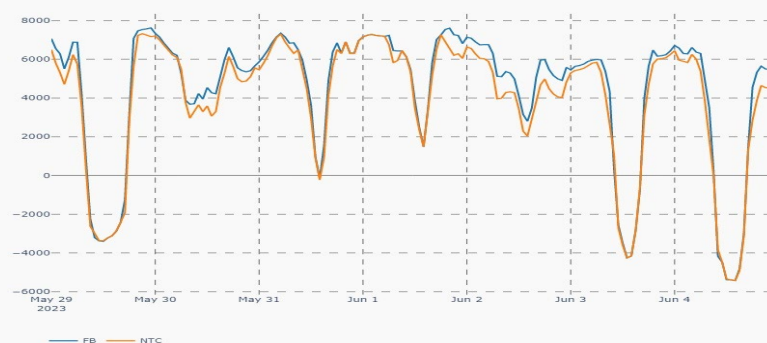
Nordic Prices – Weekly Average

	FB Price (€/MWh)	NTC Price (€/MWh)	FB-NTC Price (€/MWh)	FB-NTC Price (%)
DK1	55.78	59.64	-3.86	-6.48
DK2	56.33	62.71	-6.38	-10.18
FI	16.62	13.33	3.29	24.69
NO1	43.46	47.38	-3.92	-8.27
NO2	49.35	55.02	-5.68	-10.32
NO3	19.90	7.45	12.45	167.11
NO4	12.42	7.44	4.98	66.95
NO5	42.57	47.38	-4.81	-10.15
SE1	14.57	9.77	4.80	49.14
SE2	8.92	9.77	-0.85	-8.73
SE3	28.02	26.21	1.81	6.91
SE4	38.90	60.98	-22.08	-36.21

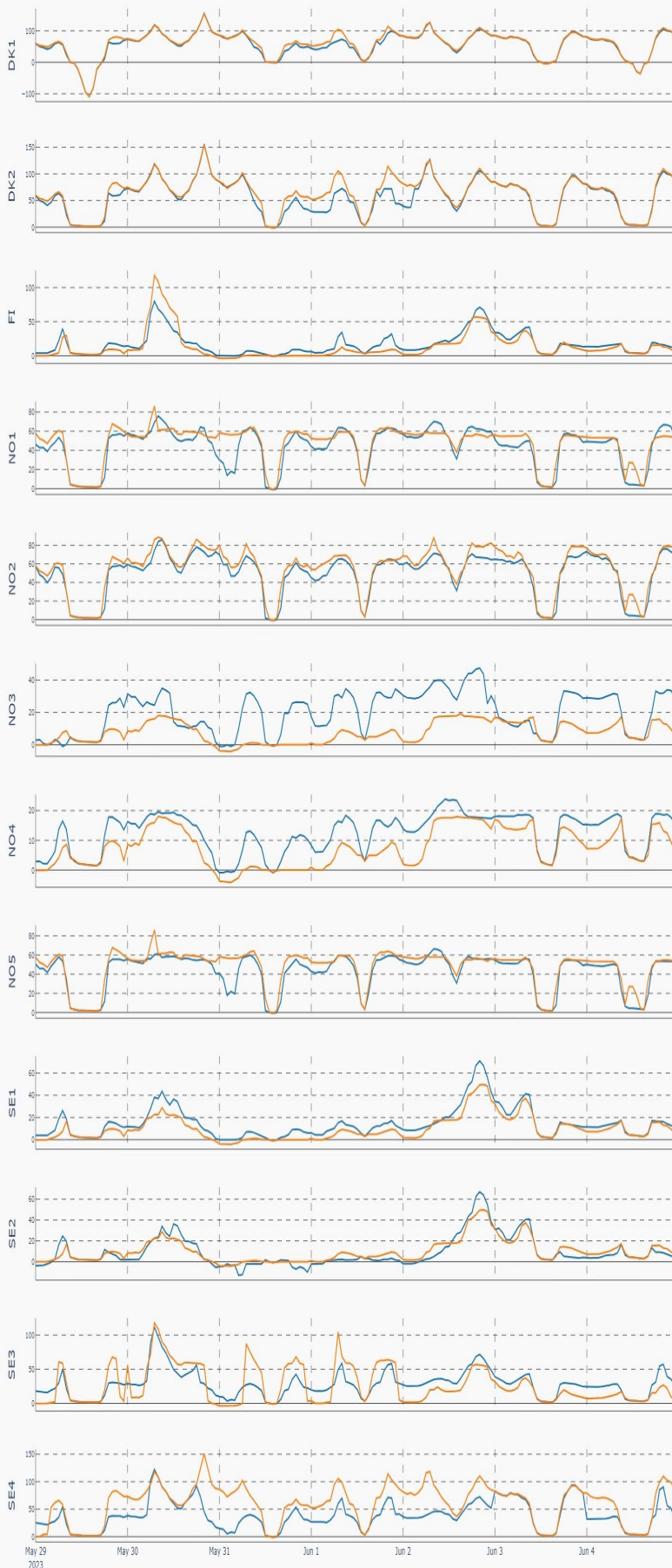
Nordic Prices – Duration Curve (€/MWh)



Nordic Net Position



Nordic Price per Bidding Zone (€/MWh)



Nordic Net Position per Bidding Zone

