

Nordic CCM Market Report: 2023 Week 31

*For more information on the EPR and other published data consult the EPR Handbook

General Remark

This week sees an overall change for the Nordic CCR of 2.36 M€, a change of 2.03 M€ on the Hansa/Baltic border, and a change of 3.31 M€ for the external areas, resulting in a change of 7.70 M€ for the entire SDAC area.

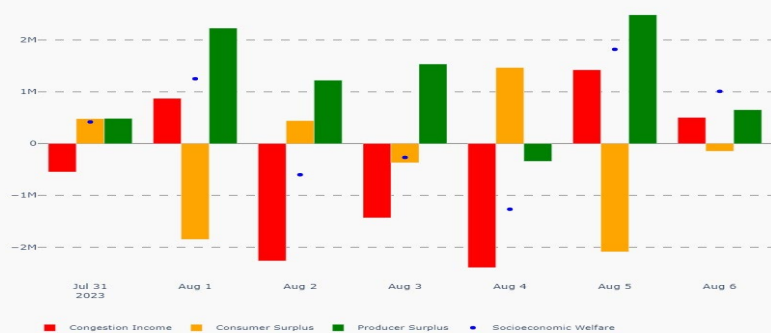
Domain was accepted for all days. Swedish IGMs were substituted for Wednesday for MTUs 21-23. IVA provisions for DK1->NO2 for both direction were done from Monday to Friday. Also, FI south north cut IVA provision were done for Monday, Wednesday, Thursday and Friday. Fennoskan (SE3-FI) IVA provisions were done for Monday.

Week 31 results are quite similar compared to last few weeks. Nordic Flow-based net position increased 78 GWh compared NTC which generally contributed to higher prices compared to NTC. Lower SE4 area price compared to NTC is affected by lower Flow-based net position.

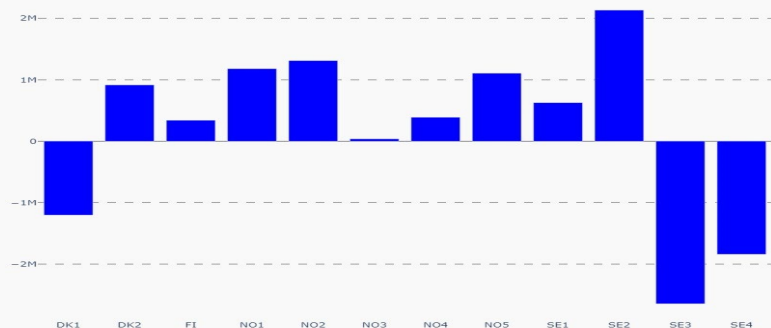
Nordic CCR Socio-economic Welfare Result (M€)

	DK	NO	SE	FI	Sum
Congestion Income	-0.24	1.98	-5.30	-0.28	-3.84
Consumer Surplus	1.89	1.09	-4.24	-0.81	-2.07
Producer Surplus	-1.94	0.97	7.81	1.43	8.26
Sum	-0.29	4.03	-1.73	0.34	2.36

Daily Nordic Socio-economic Welfare (M€)



Socio-economic Welfare change per Nordic BZ (M€)



Data Quality

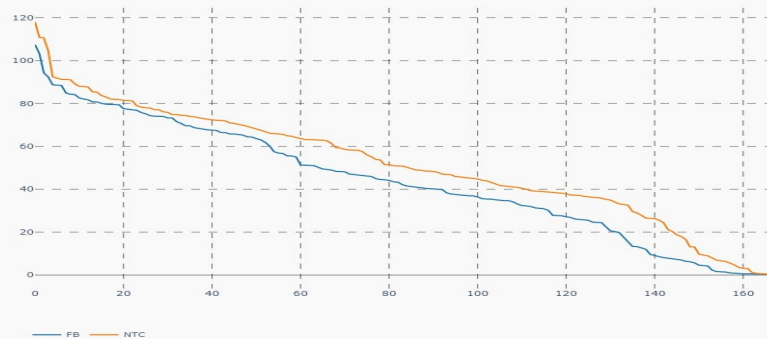
	31/07 Mon	01/08 Tue	02/08 Wed	03/08 Thu	04/08 Fri	05/08 Sat	06/08 Sun
Substituted IGMs	0	0	3	0	0	0	0
IVA Provision	2	1	2	2	2	0	0
Accepted Domain	100%	100%	100%	100%	100%	100%	100%

*IVAs can be viewed on JAO under validation reductions

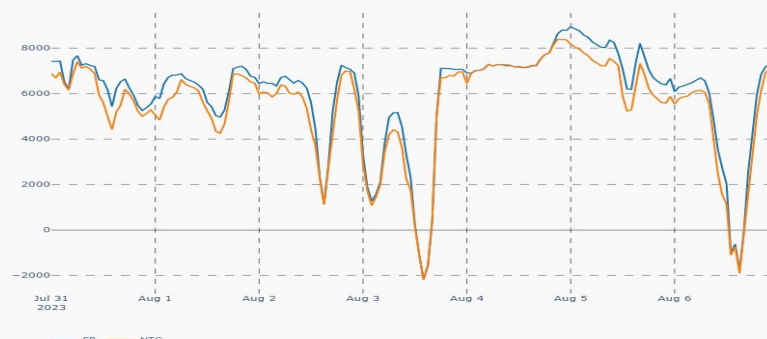
Nordic Prices – Weekly Average

	FB Price (€/MWh)	NTC Price (€/MWh)	FB-NTC Price (€/MWh)	FB-NTC Price (%)
DK1	60.91	65.00	-4.08	-6.28
DK2	60.96	66.49	-5.52	-8.31
FI	25.88	24.63	1.25	5.08
NO1	29.21	24.67	4.54	18.39
NO2	51.14	57.23	-6.09	-10.63
NO3	24.87	22.51	2.36	10.49
NO4	18.80	17.81	1.00	5.59
NO5	26.38	24.67	1.71	6.92
SE1	25.82	22.23	3.59	16.17
SE2	24.63	22.23	2.41	10.83
SE3	26.67	22.23	4.44	19.98
SE4	27.21	33.31	-6.10	-18.32

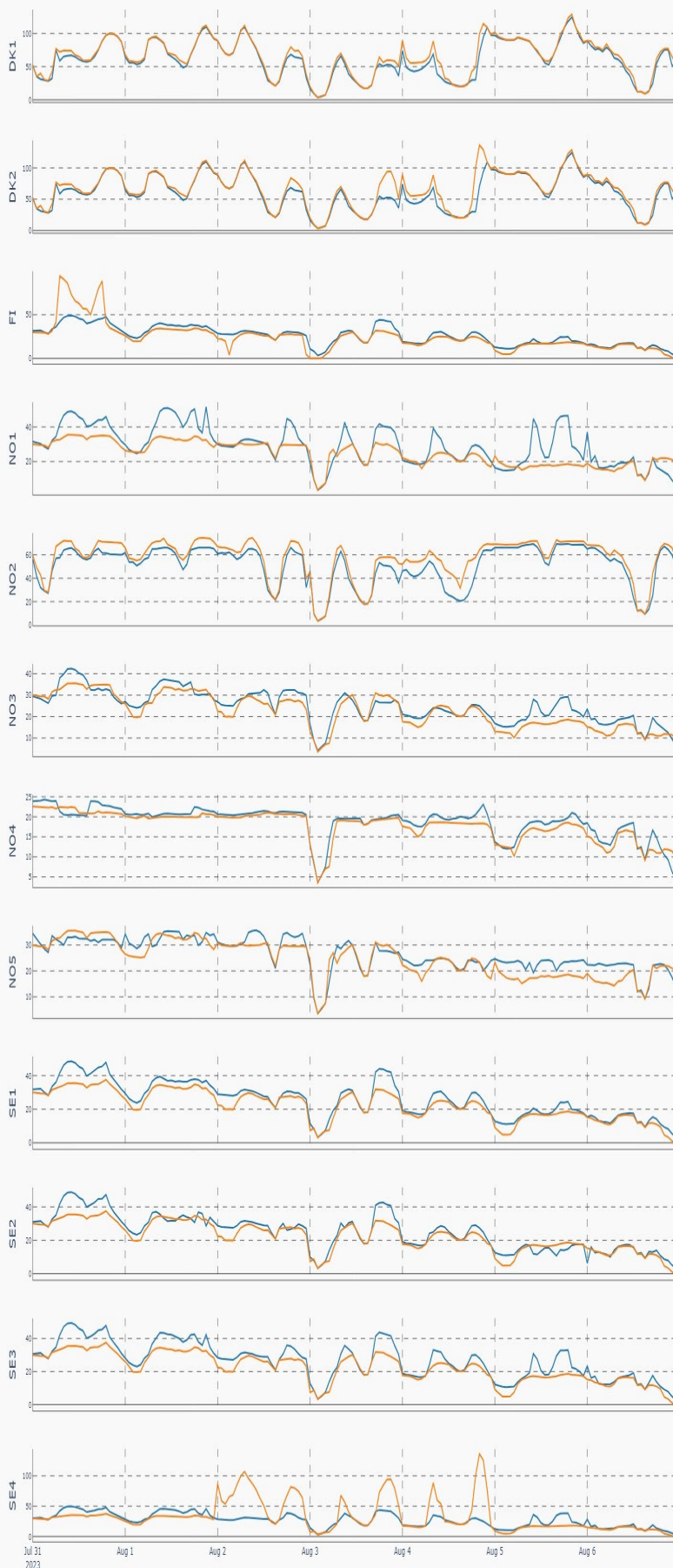
Nordic Prices – Duration Curve, $P_{BZ_{max}}$ – $P_{BZ_{min}}$ (€/MWh)



Nordic Net Position (MWh/h)



Nordic Price per Bidding Zone (€/MWh)



Nordic Net Position per Bidding Zone (MWh/h)

