

# Nordic CCM Market Report: 2023 Week 26

\*For more information on the EPR and other published data consult the EPR Handbook

## General Remark

This week sees an overall change for the Nordic CCR of -0.54 M€, a change of -0.71 M€ on the Hansa/Baltic border, and a change of -0.16 M€ for the external areas, resulting in a change of -1.40 M€ for the entire SDAC area.

This week is the first during the EPR with a lower socio-economic welfare for both the Nordics and the entire SDAC area in FB compared to NTC. One explanation for this is that there are more overloads in NTC, especially in the Norwegian grid, which increase the SEW in NTC compared to FB. When accounting for the value of additional flow on these overloaded CNECs, the SEW value is no longer higher in NTC. In addition, there were some hours where there was non-intuitive flow on interconnectors to Denmark due to some internal constraints which were considered in FB, but not NTC. Thus, this indicates that FB better avoids overloads and maintains higher operational security.

At the end of the week, there were dramatic drops in prices in all the Nordic areas due imported solar and wind power from the continent. DK1 saw the lowest prices, down to below -400 €/MWh.

## Data Quality

	26/06 Mon	27/06 Tue	28/06 Wed	29/06 Thu	30/06 Fri	01/07 Sat	02/07 Sun
Substituted IGMs	0	0	0	0	0	0	0
IVA Provision	2	0	2	0	0	1	0
Accepted Domain	100%	100%	100%	100%	100%	100%	100%

\*IVAs can be viewed on JAO under validation reductions

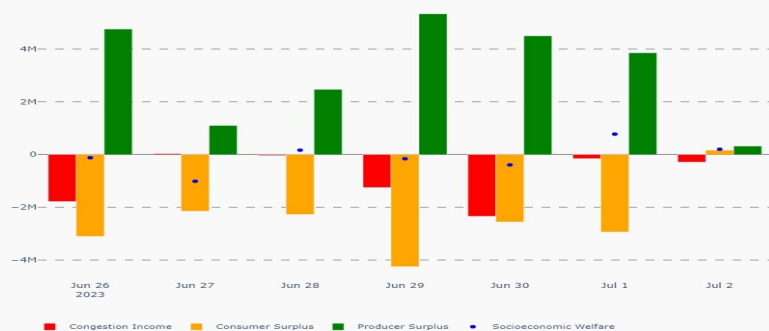
## Nordic Prices – Weekly Average

	FB Price (€/MWh)	NTC Price (€/MWh)	FB-NTC Price (€/MWh)	FB-NTC Price (%)
DK1	66.38	69.88	-3.49	-5.00
DK2	76.93	80.50	-3.57	-4.43
FI	78.21	69.50	8.71	12.52
NO1	64.73	57.75	6.98	12.09
NO2	71.94	73.33	-1.39	-1.89
NO3	20.60	19.51	1.09	5.57
NO4	18.80	18.86	-0.05	-0.29
NO5	54.38	57.46	-3.08	-5.37
SE1	78.04	68.79	9.26	13.46
SE2	77.04	68.79	8.25	12.00
SE3	75.32	68.79	6.53	9.49
SE4	75.02	77.75	-2.73	-3.51

## Nordic CCR Socio-economic Welfare Result (M€)

	DK	NO	SE	FI	Sum
Congestion Income	-0.57	-0.40	-5.14	0.33	-5.79
Consumer Surplus	1.54	-1.56	-9.54	-7.51	-17.07
Producer Surplus	-2.73	1.76	15.68	7.62	22.33
Sum	-1.75	-0.21	0.99	0.43	-0.54

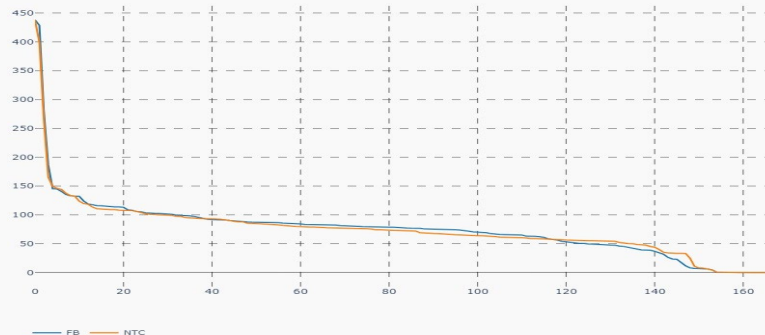
## Daily Nordic Socio-economic Welfare (M€)



## Socio-economic Welfare change per Nordic BZ (M€)



## Nordic Prices – Duration Curve, $P_{BZ_{max}} - P_{BZ_{min}}$ (€/MWh)



## Nordic Net Position (MWh/h)



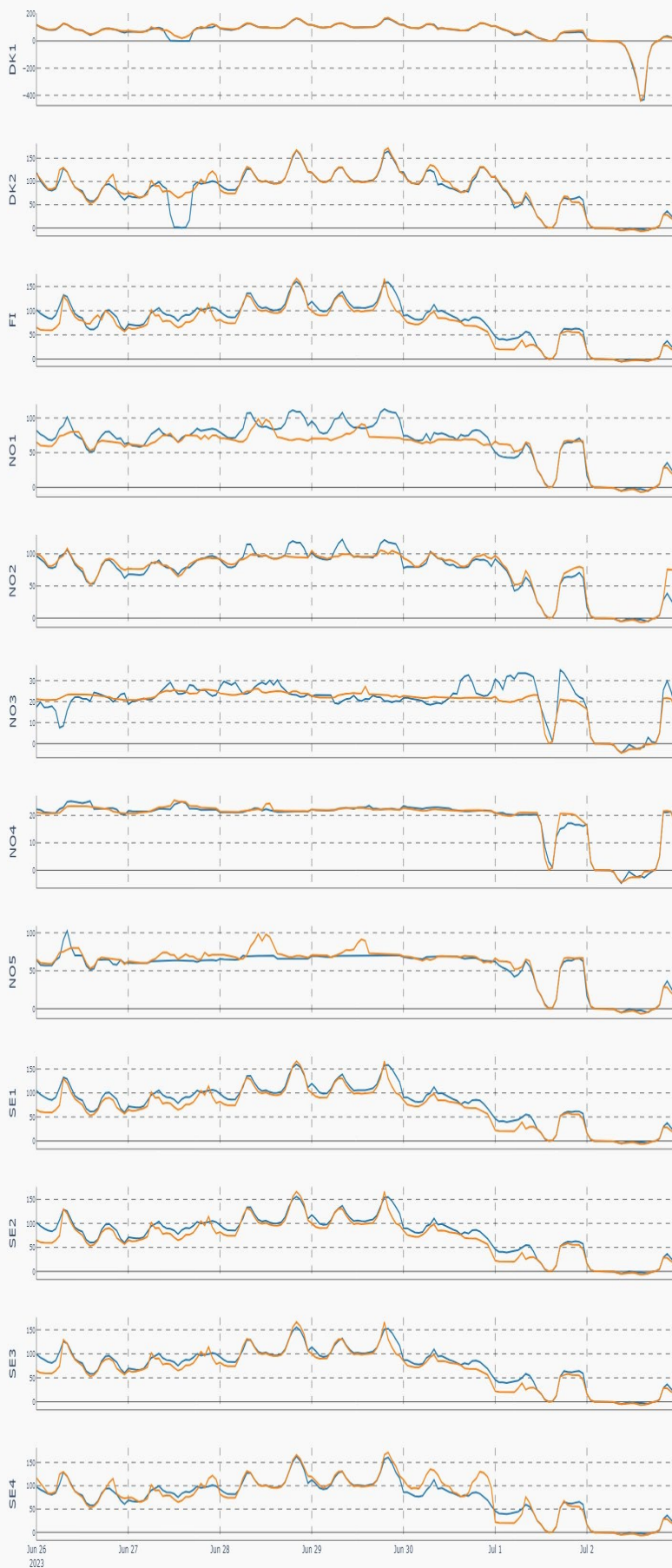
ENERGINET

SVENSKA  
KRAFTNÄT

FINGRID

Statnett

Nordic Price per Bidding Zone (€/MWh)



Nordic Net Position per Bidding Zone (MWh/h)

