

Nordic CCM Market Report: 2023 Week 27

*For more information on the EPR and other published data consult the EPR Handbook

General Remark

This week sees an overall change for the Nordic CCR of 4.30 M€, a change of 0.33 M€ on the Hansa/Baltic border, and a change of -0.18 M€ for the external areas, resulting in a change of 4.46 M€ for the entire SDAC area.

The SEW is positive for all days of the week. The prices decreases in the southern Norwegian bidding zones (NO1, NO2, and NO5) as well as the Danish bidding zones (DK1, and DK2). The other bidding zones see a price increase.

IVA was applied by ENDK on the 7th and 8th due to temperature restrictions. IVA was also applied by SvK on the 9th due to an outage being finished earlier than expected.

Data Quality

	03/07 Mon	04/07 Tue	05/07 Wed	06/07 Thu	07/07 Fri	08/07 Sat	09/07 Sun
Substituted IGMs	0	0	0	0	0	0	0
IVA Provision	0	0	0	0	0	1	2
Accepted Domain	100%	100%	100%	100%	100%	100%	100%

*IVAs can be viewed on JAO under validation reductions

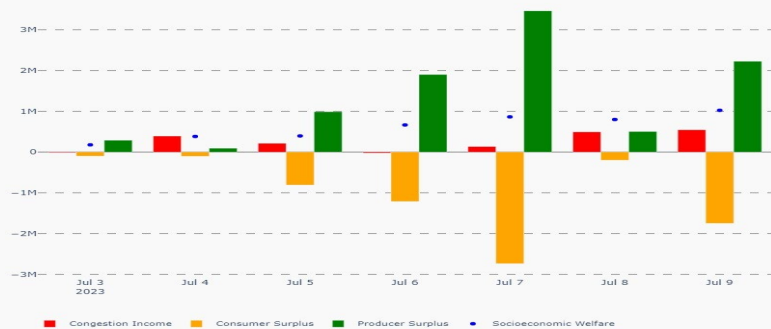
Nordic Prices – Weekly Average

	FB Price (€/MWh)	NTC Price (€/MWh)	FB-NTC Price (€/MWh)	FB-NTC Price (%)
DK1	70.71	72.43	-1.73	-2.39
DK2	69.75	70.16	-0.41	-0.58
FI	53.09	48.62	4.47	9.20
NO1	50.34	51.43	-1.10	-2.13
NO2	67.41	72.62	-5.22	-7.18
NO3	37.81	35.34	2.47	6.98
NO4	24.61	23.89	0.72	3.03
NO5	51.08	51.63	-0.55	-1.07
SE1	53.03	48.62	4.42	9.09
SE2	52.39	48.62	3.77	7.76
SE3	52.52	48.62	3.90	8.03
SE4	53.68	51.05	2.63	5.15

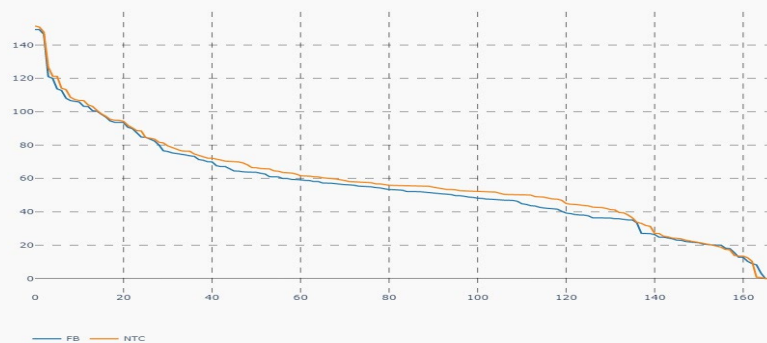
Nordic CCR Socio-economic Welfare Result (M€)

	DK	NO	SE	FI	Sum
Congestion Income	-1.02	2.31	0.18	0.26	1.74
Consumer Surplus	0.41	3.16	-6.49	-3.98	-6.90
Producer Surplus	-0.86	-2.47	8.85	3.94	9.46
Sum	-1.46	3.00	2.54	0.23	4.30

Daily Nordic Socio-economic Welfare (M€)



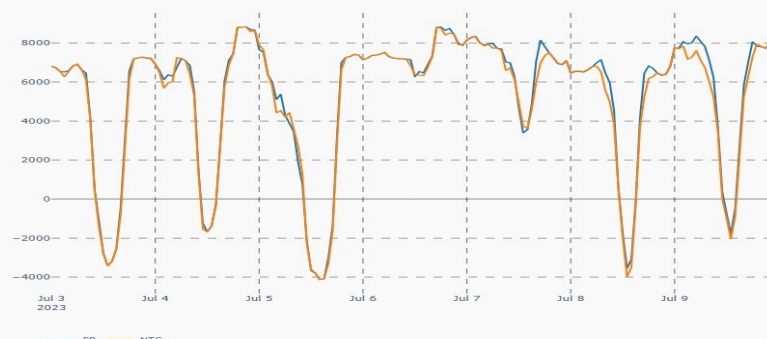
Nordic Prices – Duration Curve, $P_{BZ_{max}} - P_{BZ_{min}}$ (€/MWh)



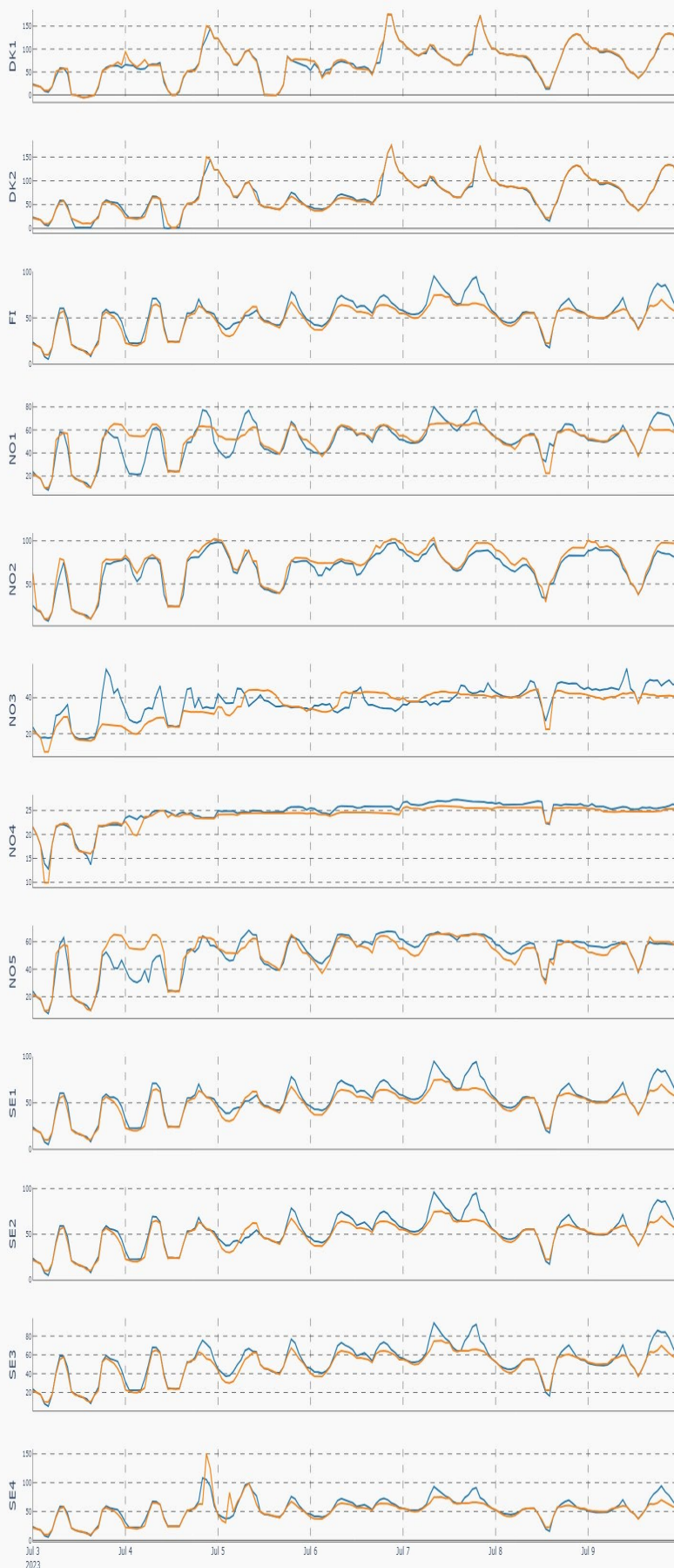
Socio-economic Welfare change per Nordic BZ (M€)



Nordic Net Position (MWh/h)



Nordic Price per Bidding Zone (€/MWh)



Nordic Net Position per Bidding Zone (MWh/h)

