

# Nordic CCM Market Report: 2023 Week 28

\*For more information on the EPR and other published data consult the EPR Handbook

## General Remark

This week sees an overall change for the Nordic CCR of 0.64 M€, a change of 5.08 M€ on the Hansa/Baltic border, and a change of 0.08 M€ for the external areas, resulting in a change of 5.80 M€ for the entire SDAC area.

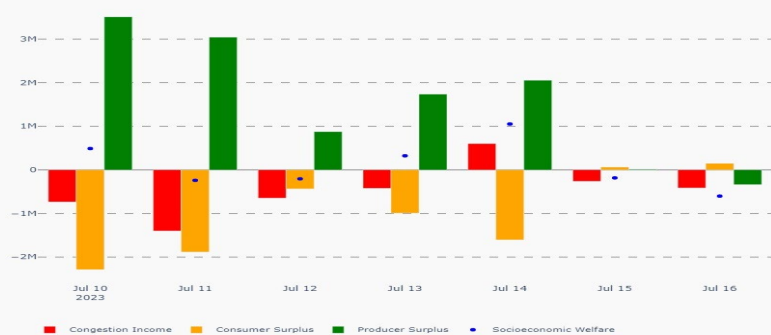
During this week, there are four days when the impact from FB for the Nordic socio-economic welfare (SEW) is negative. However, FB increases the SEW in whole SDAC region for all days of the week, meaning that external areas benefit from higher Nordic export.

On Sunday July 16<sup>th</sup> there were very low negative prices during the day in most of the Nordic bidding zones, both in NTC and FB, due to the combination of low power consumption and high renewable power generation, including imports from the continental Europe. It can be seen that NO3 and NO5 are able to benefit from the low prices in FB but not in NTC, i.e. enabling consumers in more bidding zones to benefit from the situation.

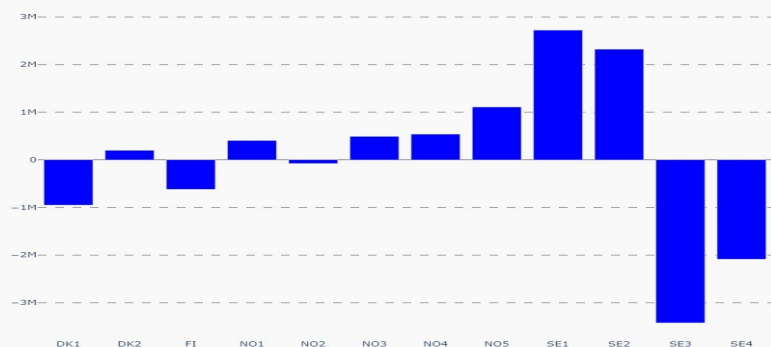
## Nordic CCR Socio-economic Welfare Result (M€)

	DK	NO	SE	FI	Sum
Congestion Income	-0.06	2.03	-5.45	0.20	-3.28
Consumer Surplus	1.33	2.25	-4.82	-5.75	-6.99
Producer Surplus	-2.03	-1.80	9.80	4.93	10.90
Sum	-0.75	2.47	-0.46	-0.62	0.64

## Daily Nordic Socio-economic Welfare (M€)



## Socio-economic Welfare change per Nordic BZ (M€)



## Data Quality

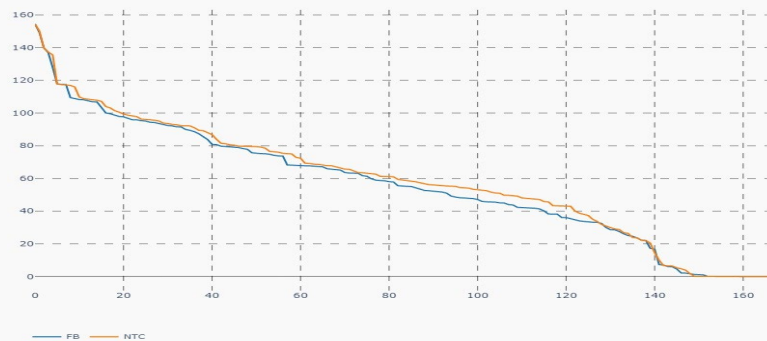
	10/07 Mon	11/07 Tue	12/07 Wed	13/07 Thu	14/07 Fri	15/07 Sat	16/07 Sun
Substituted IGMs	0	0	0	0	0	0	0
IVA Provision	0	1	1	0	0	2	0
Accepted Domain	100%	100%	100%	100%	100%	100%	100%

\*IVAs can be viewed on JAO under validation reductions

## Nordic Prices – Weekly Average

	FB Price (€/MWh)	NTC Price (€/MWh)	FB-NTC Price (€/MWh)	FB-NTC Price (%)
DK1	69.01	72.04	-3.02	-4.20
DK2	67.22	70.62	-3.39	-4.81
FI	43.86	37.73	6.13	16.26
NO1	39.61	36.77	2.84	7.72
NO2	53.14	59.27	-6.13	-10.35
NO3	26.93	24.98	1.95	7.79
NO4	19.40	18.58	0.82	4.39
NO5	38.66	38.23	0.44	1.14
SE1	42.52	36.21	6.31	17.42
SE2	39.68	36.21	3.46	9.57
SE3	41.51	37.14	4.37	11.77
SE4	41.38	47.49	-6.11	-12.87

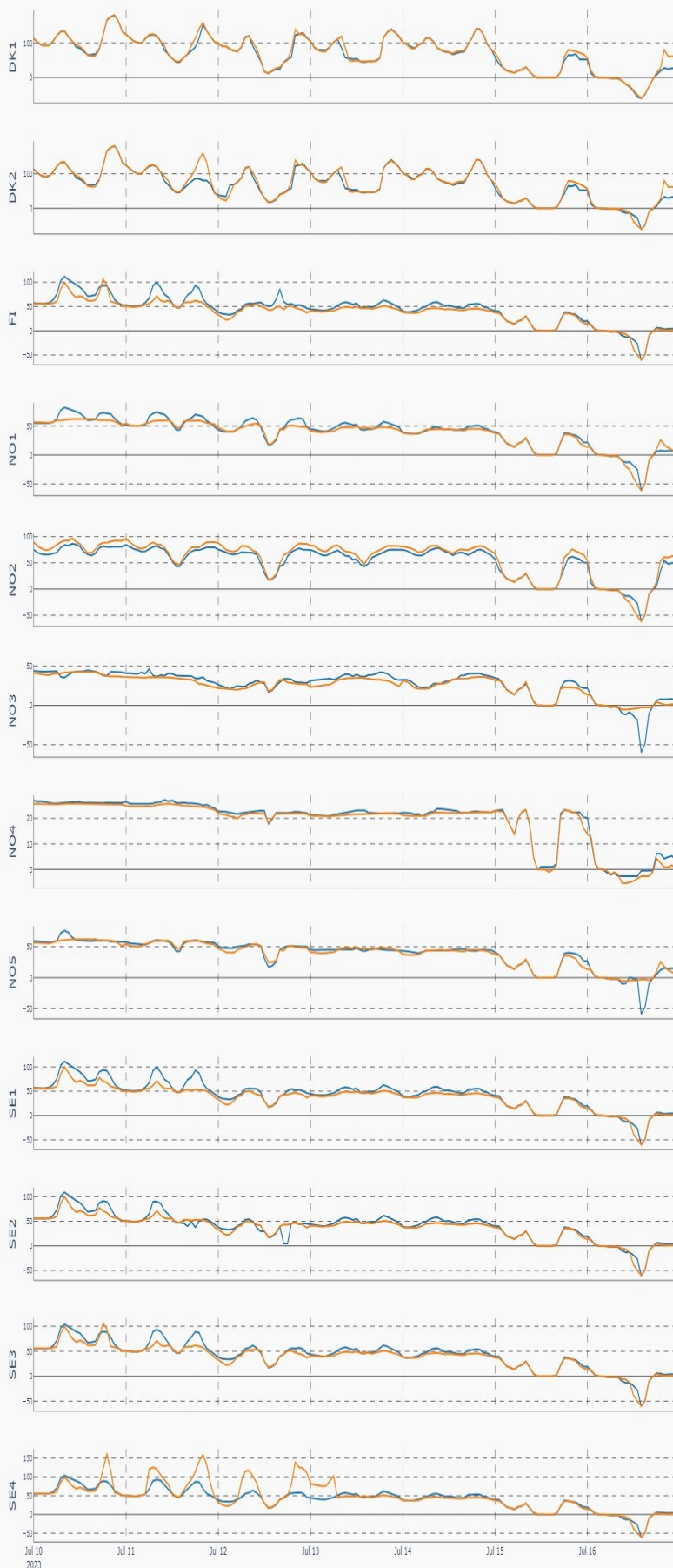
## Nordic Prices – Duration Curve, $P_{BZ_{max}} - P_{BZ_{min}}$ (€/MWh)



## Nordic Net Position (MWh/h)



Nordic Price per Bidding Zone (€/MWh)



Nordic Net Position per Bidding Zone (MWh/h)

