



## 4. After DA go-live: ID, LT, BT (10:20 – 10:35 CET)

Nordic CCM Stakeholder Meeting  
15 September 2023

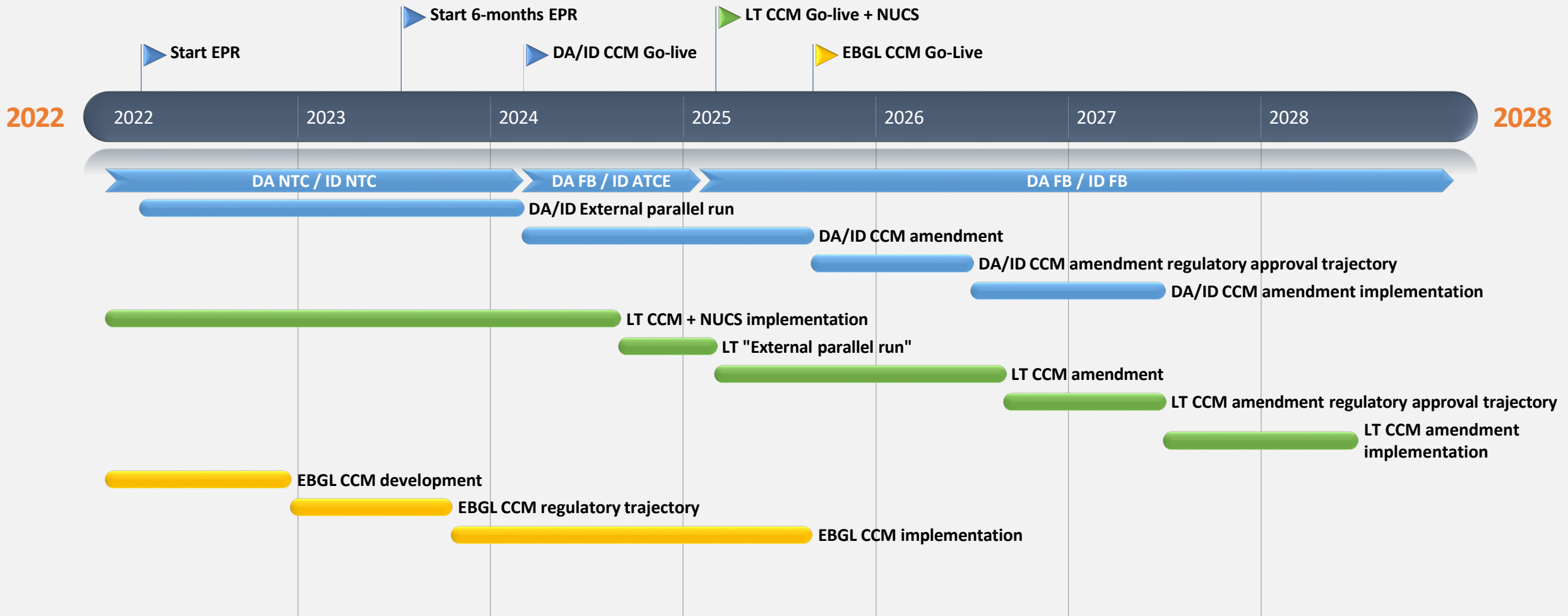
Trond Jensen

[trond.jensen@statnett.no](mailto:trond.jensen@statnett.no)



# Indicative timeline

- DA and ID CCM
- LT CCM
- EBGL CCM





# LT

- FB capacity calculation - and allocation in LT auctions, where applicable - for information purposes
- Year-ahead forecasts are based on 8 CGMs (i.e. 8 scenarios: 4 seasons, peak and off-peak)
- Month-ahead forecasts are based on 2 CGMs (i.e. 2 scenarios: peak and off-peak)

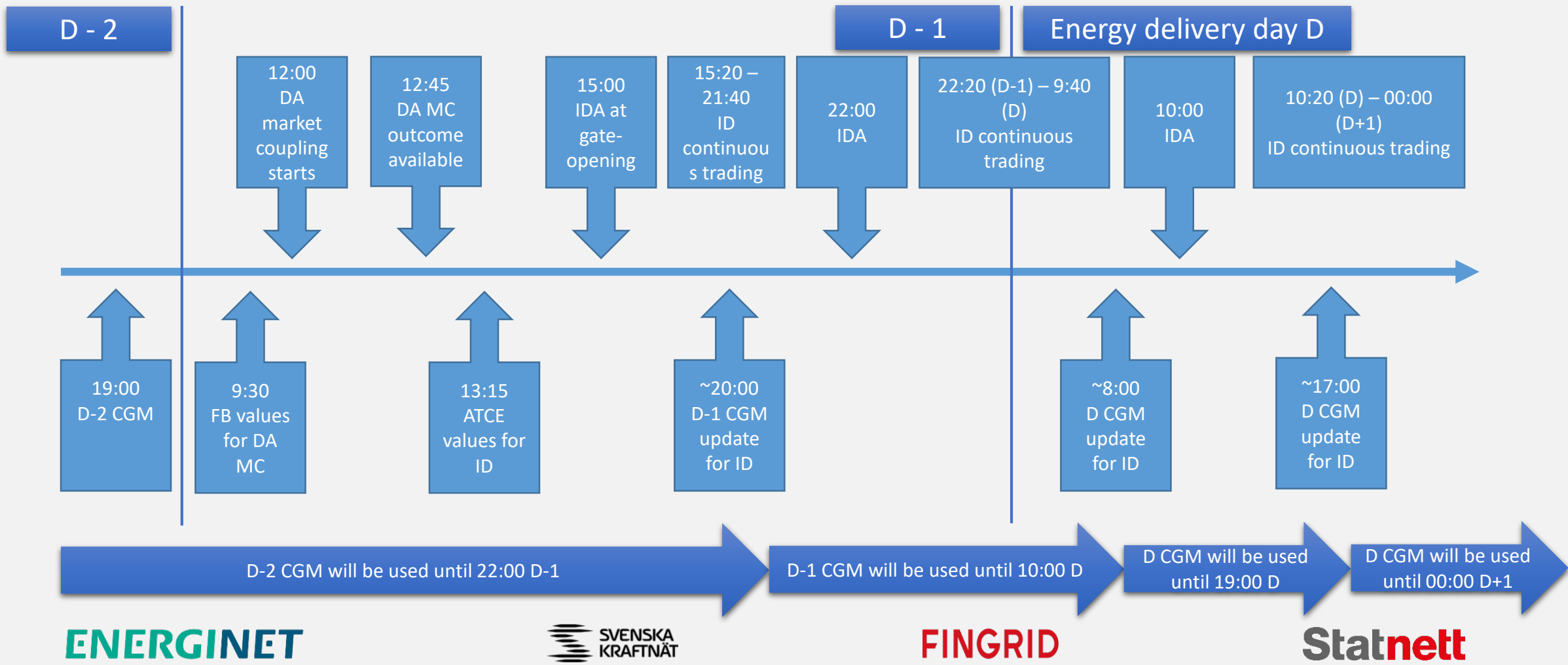


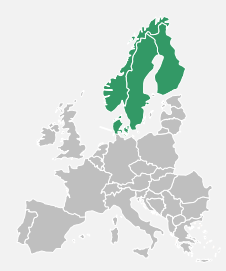
Note: In the Oct 26 SH meeting, an update will be provided on the LT and NUCS implementation



# ID

## FB capacity calculation and allocation in ID auctions and ID continuous trading





# Balancing Timeframe (BT)

- The BT CCM describes how the Nordic TSOs assess the amount of cross-border capacity available for the balancing timeframe
- The capacity provided to the balancing platforms (MARI, and PICASSO) is updated by a common Capacity Management Module (CMM)

