

# Nordic CCM Market Report: 2023 Week 39

\*For more information on the EPR and other published data consult the EPR Handbook

## General Remark

This week sees an overall change for the Nordic CCR of 0.59 M€, a change of 1.91 M€ on the Hansa/Baltic border, and a change of 0.07 M€ for the external areas, resulting in a change of 2.58 M€ for the entire SDAC area.

The changes in SEW are not that high during this week due to few constraints in the grid and low prices. Some days resulted in total SEW decrease for the Nordic CCR, but when accounting for the Nordic share of congestion income increase on external HVDC links, those days are still positive. This is due to the shift of congestion from internal borders to external borders as the prices in especially NO2 are reduced by 30% closer to the Nordic average price.

On Tuesday, 16 missing IGMs from Statnett for MTUs 8-23 were substituted. On Wednesday, MTU 23 was substituted due to IT issues. IVAs applied on Saturday for MTUs 06-23 due to outage on Fenno-Skan by SvK.

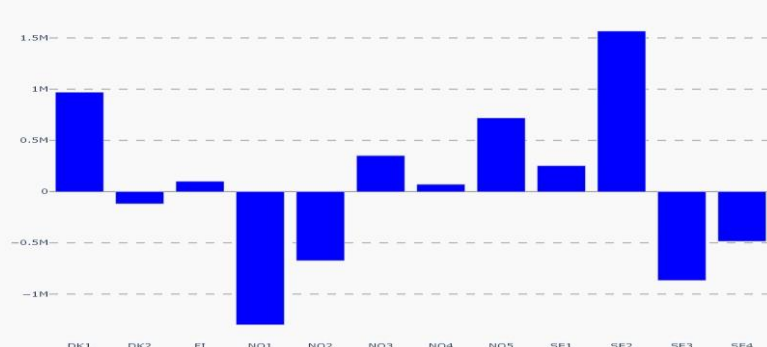
## Nordic CCR Socio-economic Welfare Result (M€)

	DK	NO	SE	FI	Sum
Congestion Income	0.86	0.43	-0.99	-0.19	0.11
Consumer Surplus	0.33	3.79	-2.96	0.39	1.55
Producer Surplus	-0.33	-5.05	4.42	-0.10	-1.06
Sum	0.85	-0.83	0.47	0.10	0.59

## Daily Nordic Socio-economic Welfare (M€)



## Socio-economic Welfare change per Nordic BZ (M€)



## Data Quality

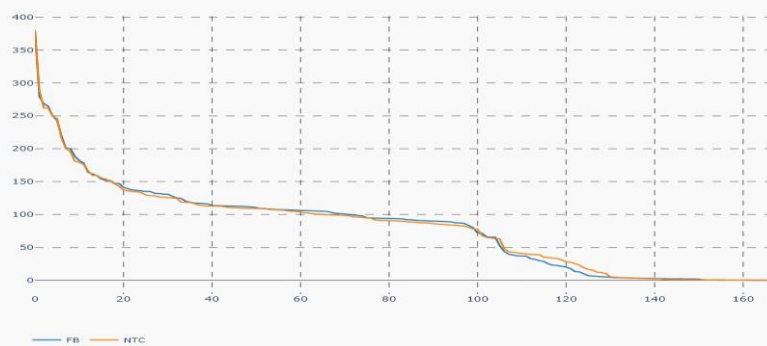
	25/09 Mon	26/09 Tue	27/09 Wed	28/09 Thu	29/09 Fri	30/09 Sat	01/10 Sun
Substituted IGMs	0	16	1	0	0	0	0
IVA Provision	0	0	0	0	0	1	0
Accepted Domain	100%	100%	100%	100%	100%	100%	100%

\*IVAs can be viewed by viewed on JAO under validation reductions

## Nordic Prices – Weekly Average

	FB Price (€/MWh)	NTC Price (€/MWh)	FB-NTC Price (€/MWh)	FB-NTC Price (%)
DK1	75.34	76.00	-0.66	-0.87
DK2	76.11	76.62	-0.50	-0.66
FI	6.47	6.73	-0.26	-3.93
NO1	6.89	-0.54	7.43	1,372.45
NO2	20.66	29.94	-9.28	-30.99
NO3	2.11	2.16	-0.05	-2.51
NO4	3.67	2.17	1.50	69.18
NO5	-2.88	-0.54	-2.33	-430.95
SE1	3.83	2.19	1.64	75.14
SE2	3.56	2.19	1.37	62.60
SE3	6.87	4.93	1.93	39.22
SE4	20.08	20.26	-0.17	-0.85

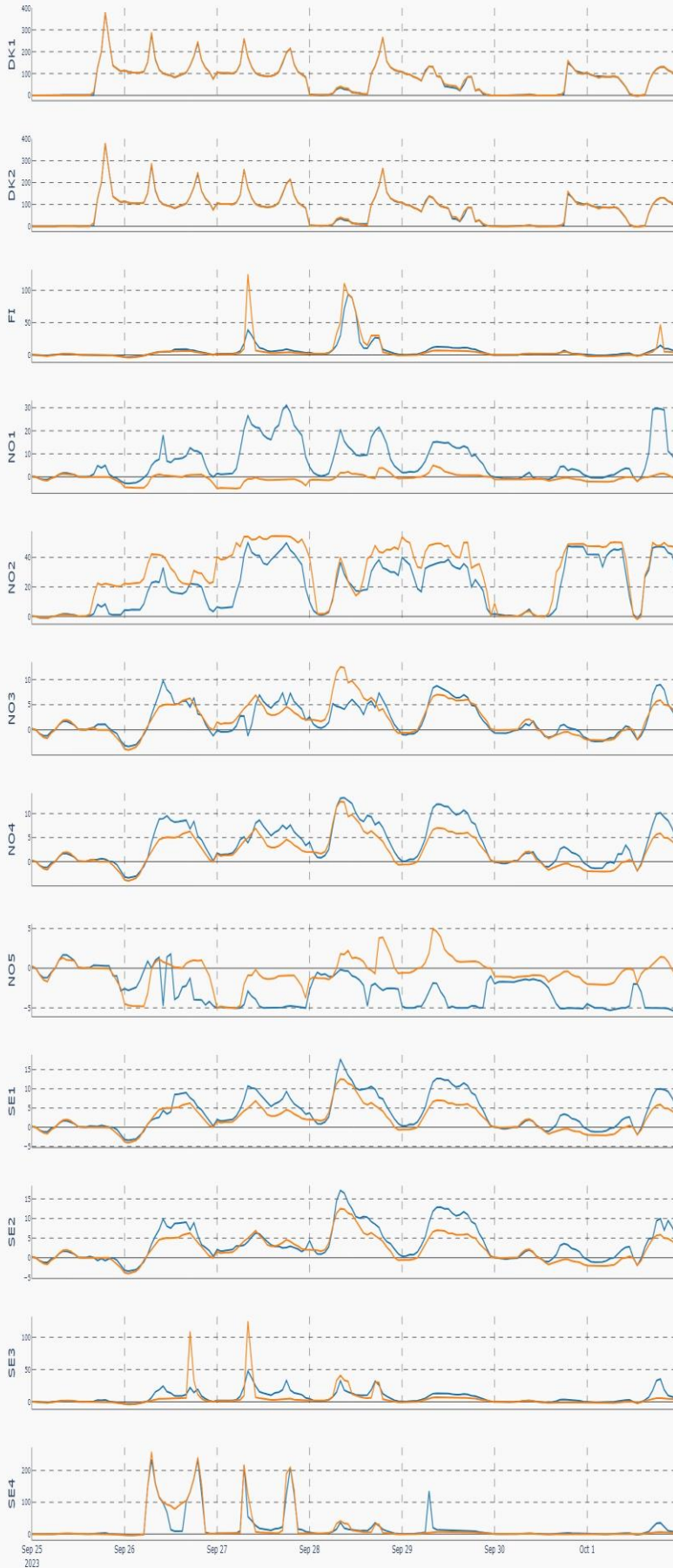
## Nordic Prices – Duration Curve (€/MWh)



## Nordic Net Position



Nordic Price per Bidding Zone (€/MWh)



Nordic Net Position per Bidding Zone

