

# Nordic CCM Market Report: 2024 Week 1

\*For more information on the EPR and other published data consult the EPR Handbook

## General Remark

This week sees an overall Socio-economic change for the Nordic CCR of 0.07 M€, a change of -1.06 M€ on the Hansa/Baltic border, and a change of -0.55 M€ for the external areas, resulting in a change of -1.53 M€ for the entire SDAC area. The same pattern as the last two weeks is seen with negative SEW for some days in the Nordics partly as a result of capacity being lower in FB than NTC on the Sauda transformers located in NO2 during hours with high import (primarily from North Sea Link and NordLink). The increased capacity in NTC requires countertrading, a cost that is not considered in the SEW estimate, whereas in FB this is instead managed by increasing the net position in NO5.

This week is generally very cold, especially on the 5th of January where we see very high prices particularly in FI with a price peak of almost 1900 EUR/MWh. On the 5th at 8:00 multiple bidding zones in the southern part of the Nordics have an accentuated price peak in FB. This is due to CNEC on SE2-SE3 border becoming too binding, especially on this hour but seen in general from early morning to the evening.

## Nordic CCR Socio-economic Welfare Result (M€)

	DK	NO	SE	FI	Sum
Congestion Income	0.33	-3.18	22.11	-0.53	18.73
Consumer Surplus	-0.86	4.96	-4.32	7.48	7.26
Producer Surplus	0.59	2.25	-23.34	-5.41	-25.92
Sum	0.07	4.03	-5.56	1.54	0.07

## Daily Nordic Socio-economic Welfare (M€)



## Socio-economic Welfare change per Nordic BZ (M€)



## Data Quality

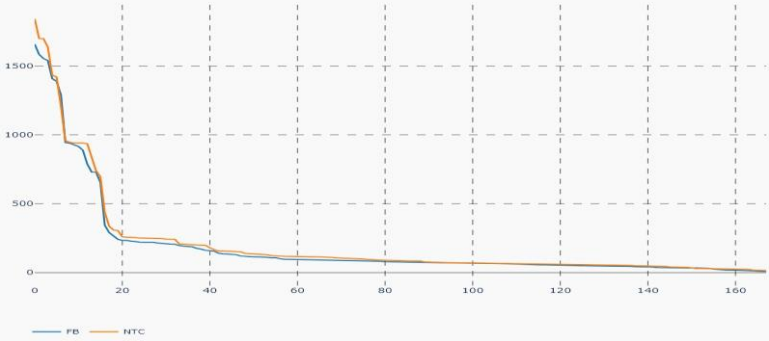
	01/01 Mon	02/01 Tue	03/01 Wed	04/01 Thu	05/01 Fri	06/01 Sat	07/01 Sun
Substituted IGMs	0	0	0	0	0	0	0
IVA Provision	0	0	0	2	0	0	0
Accepted Domain	100%	100%	100%	100%	100%	100%	100%

\*IVAs can be viewed by viewed on JAO under validation reductions

## Nordic Prices – Weekly Average

	FB Price (€/MWh)	NTC Price (€/MWh)	FB-NTC Price (€/MWh)	FB-NTC Price (%)
DK1	68.33	69.30	-0.97	-1.39
DK2	91.06	87.88	3.18	3.62
FI	238.68	242.73	-4.04	-1.67
NO1	87.58	91.54	-3.96	-4.33
NO2	75.60	76.39	-0.79	-1.03
NO3	80.23	85.75	-5.52	-6.44
NO4	61.32	41.88	19.44	46.42
NO5	89.32	93.03	-3.71	-3.99
SE1	68.57	85.42	-16.85	-19.73
SE2	71.24	85.70	-14.46	-16.87
SE3	93.63	88.81	4.82	5.42
SE4	93.96	88.81	5.15	5.80

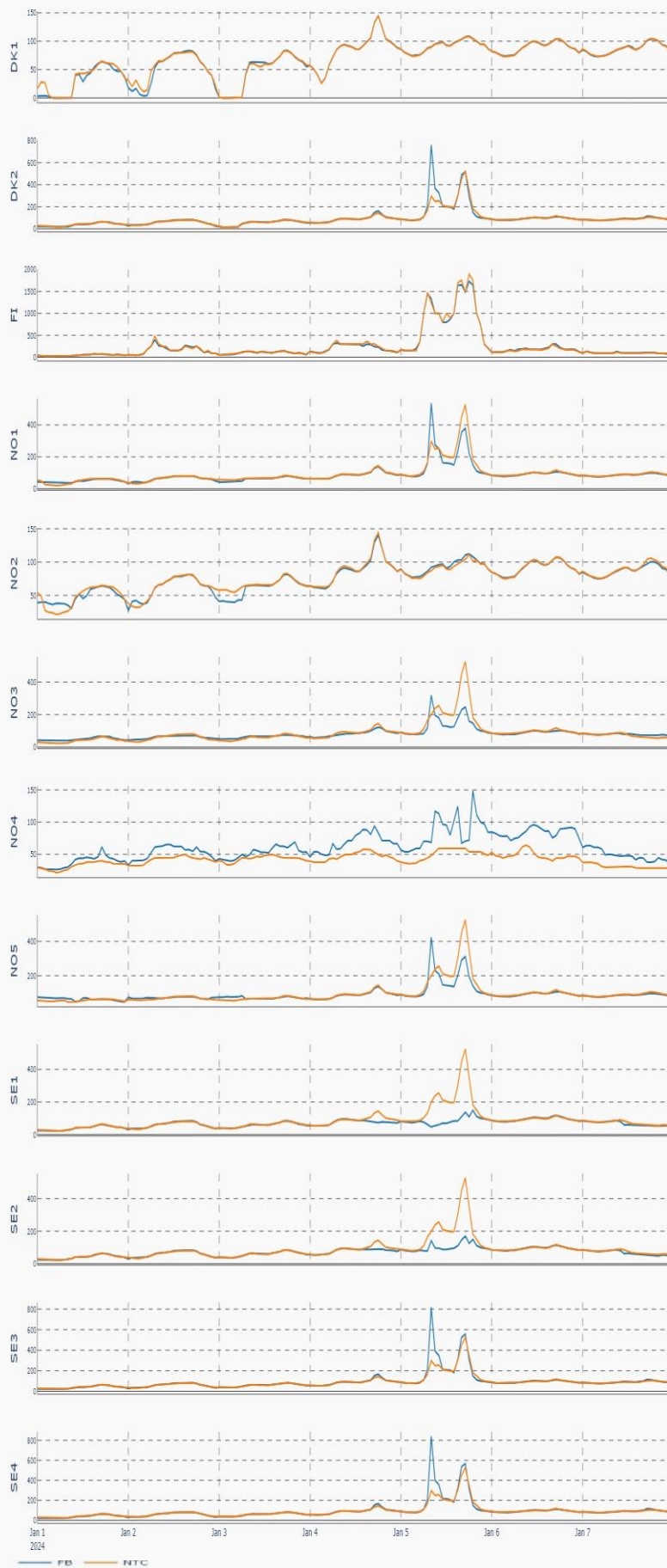
## Nordic Prices – Duration Curve (€/MWh)



## Nordic Net Position



Nordic Price per Bidding Zone (€/MWh)



Nordic Net Position per Bidding Zone

