

Nordic CCM Market Report: 2024 Week 2

*For more information on the EPR and other published data consult the EPR Handbook

General Remark

This week sees an overall change for the Nordic CCR of -4.73 M€, a change of 2.34 M€ on the Hansa/Baltic border, and a change of -1.25 M€ for the external areas, resulting in a change of -3.64 M€ for the entire SDAC area.

The negative SEW for this week is due to some Swedish CNECs and a Finnish PTC. The Swedish CNECs are between SE2 and SE3, and is due to different configurations of the series capacitors for some periods during the week. This limited the flow in FB more than in NTC, and the series capacitor configuration could have been further optimized in FB to allow for a higher flow. However, operational experience also shows that countertrading was at times required to reduce the flow on SE2-SE3. This indicates that the NTC capacities were not operationally secure for all hours. The limitation on the Finnish PTC was due to an outage on 8 and 9 January, where FB limited the capacity more than NTC. Here, FB was too limiting, and Fingrid is looking into how to use this PTC in the future in such situations.

In terms of data quality, Svk IGMs were substituted on Saturday due to failure on Swepol.

Data Quality

	08/01 Mon	09/01 Tue	10/01 Wed	11/01 Thu	12/01 Fri	13/01 Sat	14/01 Sun
Substituted IGMs	0	0	0	0	0	24	0
IVA Provision	0	0	1	1	0	0	0
Accepted Domain	100%	100%	100%	100%	100%	100%	100%

*IVAs can be viewed be viewed on JAO under validation reductions

Nordic Prices – Weekly Average

	FB Price (€/MWh)	NTC Price (€/MWh)	FB-NTC Price (€/MWh)	FB-NTC Price (%)
DK1	97.96	97.79	0.17	0.17
DK2	101.82	97.91	3.91	3.99
FI	89.78	82.81	6.97	8.42
NO1	88.73	95.14	-6.41	-6.74
NO2	89.73	94.82	-5.10	-5.37
NO3	63.15	54.80	8.35	15.24
NO4	46.80	44.86	1.94	4.33
NO5	86.01	93.82	-7.81	-8.33
SE1	49.07	49.09	-0.02	-0.04
SE2	42.46	49.09	-6.64	-13.52
SE3	95.17	84.99	10.18	11.98
SE4	100.97	95.02	5.95	6.26

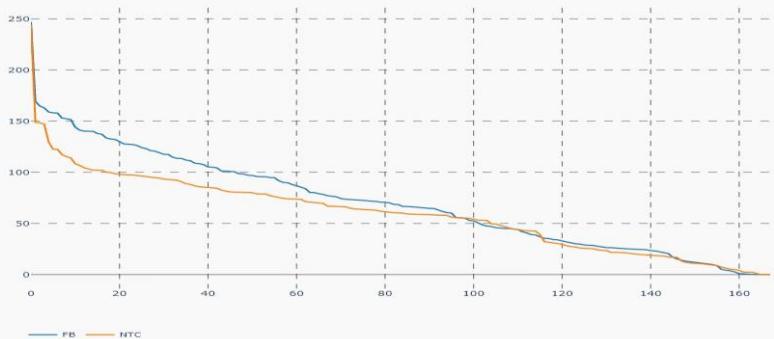
Nordic CCR Socio-economic Welfare Result (M€)

	DK	NO	SE	FI	Sum
Congestion Income	0.53	3.23	10.34	-0.63	13.47
Consumer Surplus	-2.05	10.25	-20.46	-9.86	-22.12
Producer Surplus	0.64	-13.22	7.07	9.43	3.93
Sum	-0.88	0.27	-3.05	-1.06	-4.73

Daily Nordic Socio-economic Welfare (M€)



Nordic Prices – Duration Curve (€/MWh)



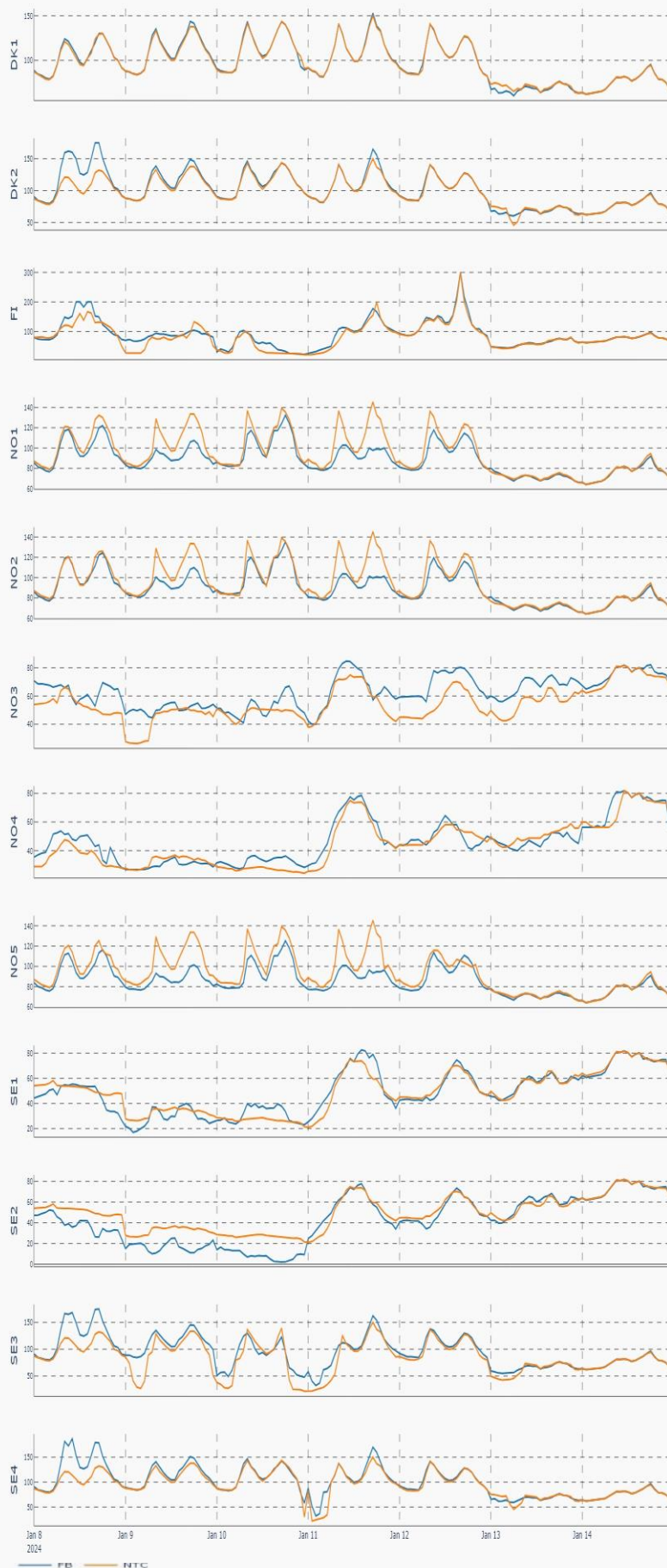
Socio-economic Welfare change per Nordic BZ (M€)



Nordic Net Position



Nordic Price per Bidding Zone (€/MWh)



Nordic Net Position per Bidding Zone

