

# Nordic CCM Market Report: 2024 Week 9

\*For more information on the EPR and other published data consult the EPR Handbook

## General Remark

This week sees an overall socioeconomic welfare change for the Nordic CCR of 4.29 M€, a change of -0.04 M€ on the Hansa/Baltic border, and a change of 0.09 M€ for the external areas, resulting in a change of 4.34 M€ for the entire SDAC area.

From Tuesday to Friday there is high wind production in SE1 and SE2 resulting in lower prices in these bidding zones both in FB and NTC. Overall the price in FB decreases in southern Norway and Denmark and increases in the other Nordic bidding zones. Most gains from FB are seen in Sweden where the Producer Surplus & Congestion Income are increased, due to increased flow from SE2 to SE3, and from SE3 to DK1 & NO1.

During this week starting from Monday the FRM changed to 10 % for certain Swedish CNECs (see latest Operational learning (OLP) point document for more details) and from Saturday a new constraint has been added to the SWL preventing flows going north (more details in next version of OLP document). Shadow prices and flow analysis suggests the impact of aforementioned changes is very small for this week.

## Nordic CCR Socio-economic Welfare Result (M€)

	DK	NO	SE	FI	Sum
Congestion Income	-0.68	1.94	1.80	-0.06	3.00
Consumer Surplus	0.65	-3.20	-13.85	-2.75	-19.15
Producer Surplus	-1.00	2.47	16.08	2.89	20.44
Sum	-1.03	1.21	4.02	0.09	4.29

## Daily Nordic Socio-economic Welfare (M€)



## Socio-economic Welfare change per Nordic BZ (M€)



## Data Quality

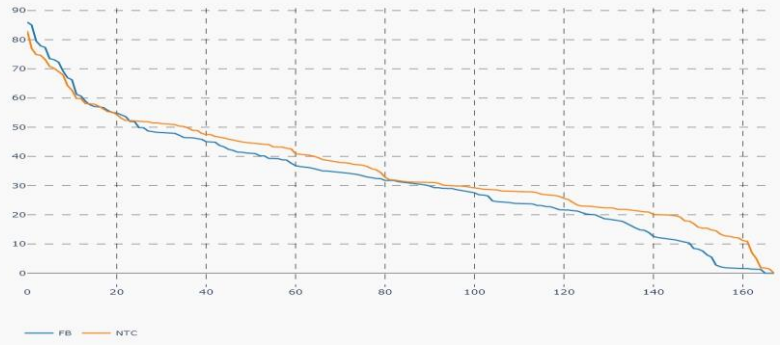
	26/02 Mon	27/02 Tue	28/02 Wed	29/02 Thu	01/03 Fri	02/03 Sat	03/03 Sun
Substituted IGMs	0	0	0	0	0	0	0
IVA Provision	0	0	2	0	0	0	0
Accepted Domain	0	0	0	0	0	0	0

\*IVAs can be viewed by viewed on JAO under validation reductions

## Nordic Prices – Weekly Average

	FB Price (€/MWh)	NTC Price (€/MWh)	FB-NTC Price (€/MWh)	FB-NTC Price (%)
DK1	62.15	63.84	-1.69	-2.65
DK2	61.82	62.11	-0.29	-0.46
FI	42.45	40.12	2.34	5.83
NO1	55.22	56.78	-1.56	-2.75
NO2	55.54	56.78	-1.23	-2.17
NO3	44.21	35.30	8.91	25.23
NO4	36.36	32.11	4.25	13.25
NO5	54.28	56.78	-2.49	-4.39
SE1	36.27	33.42	2.85	8.52
SE2	36.34	33.42	2.92	8.73
SE3	46.52	39.70	6.82	17.18
SE4	54.21	50.79	3.42	6.73

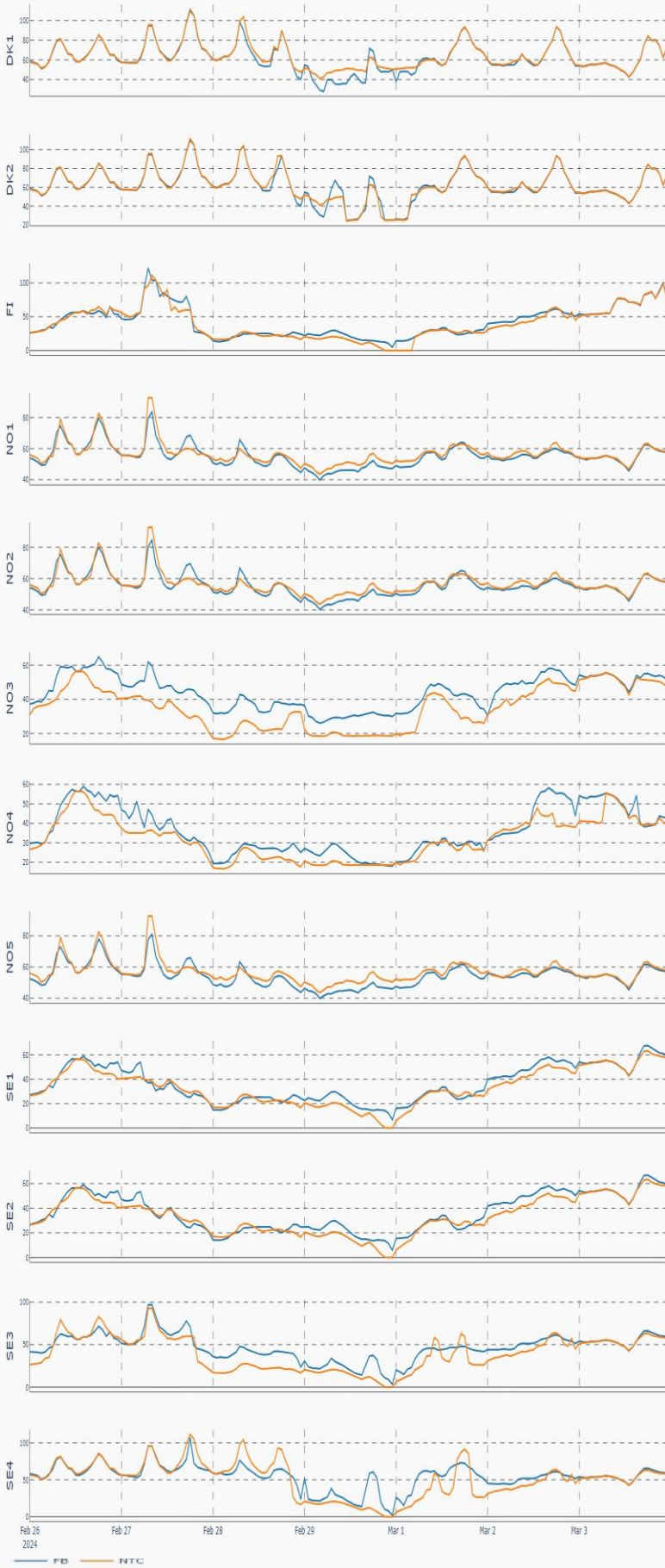
## Nordic Prices – Duration Curve (€/MWh)



## Nordic Net Position



## Nordic Price per Bidding Zone (€/MWh)



## Nordic Net Position per Bidding Zone

