

# Nordic CCM Market Report: 2024 Week 14

\*For more information on the EPR and other published data consult the EPR Handbook

## General Remark

This week sees an overall change for the Nordic CCR of 2.36 M€, a change of -0.89 M€ on the Hansa/Baltic border, and a change of -0.43 M€ for the external areas, resulting in a change of 1.05 M€ for the entire SDAC area.

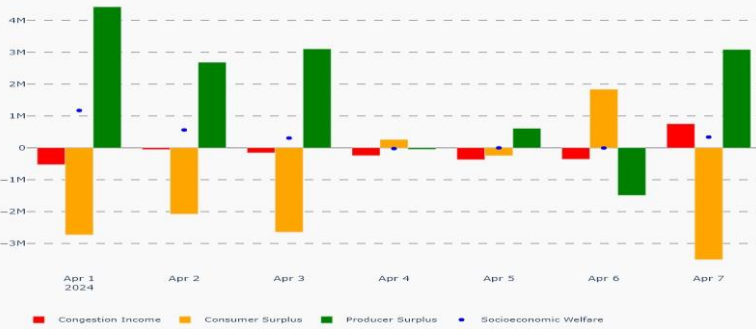
Overall week 14 shows positive SEW both for the Nordic CCR and for the entire SDAC area. The most significant negative SEW gain is caused by the Sauda CNEC in NO2, limiting flow from NO2-NO5. However, this flow pattern enhances operational security and reduces countertrading. This has occurred previously as well during periods of high import from the continent, more information can be found in the Operational Learning Points document.

This week IVAs were provided on Thursday, Friday, and Saturday on the Sauda CNEC. This was done to increase the RAM from 0 on the CNEC, because the operators considered the increased RAM to be inside operational secure limits.

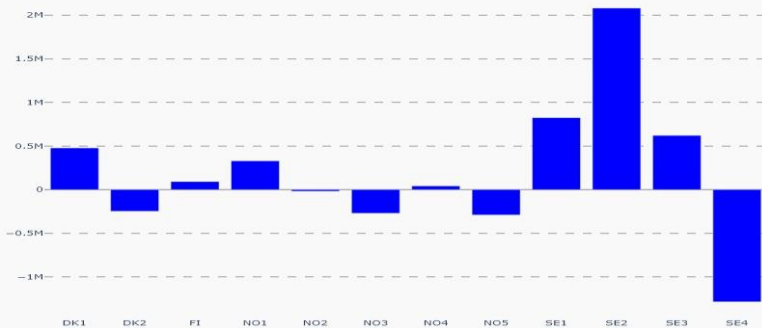
## Nordic CCR Socio-economic Welfare Result (M€)

	DK	NO	SE	FI	Sum
Congestion Income	-0.09	0.05	-0.86	-0.04	-0.93
Consumer Surplus	1.58	0.78	-7.91	-3.55	-9.09
Producer Surplus	-1.27	-1.04	11.00	3.69	12.38
Sum	0.23	-0.20	2.24	0.09	2.36

## Daily Nordic Socio-economic Welfare (M€)



## Socio-economic Welfare change per Nordic BZ (M€)



## Data Quality

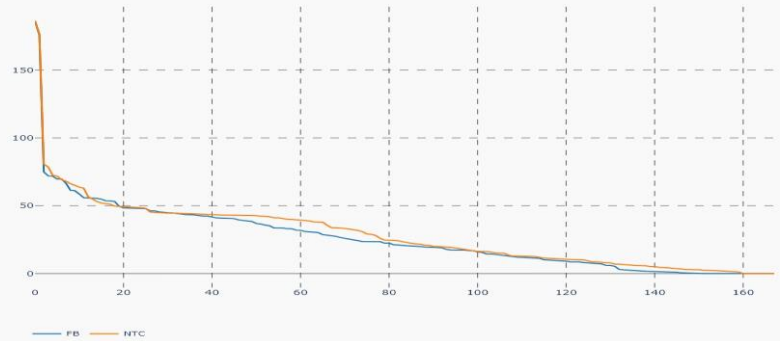
	01/04 Mon	02/04 Tue	03/04 Wed	04/04 Thu	05/04 Fri	06/04 Sat	07/04 Sun
Substituted IGMs	0	0	0	0	0	0	0
IVA Provision	0	0	1	1	1	1	0
Accepted Domain	100 %	100 %	100 %	100 %	100 %	100 %	100 %

\*IVAs can be viewed by viewed on JAO under validation reductions

## Nordic Prices – Weekly Average

	FB Price (€/MWh)	NTC Price (€/MWh)	FB-NTC Price (€/MWh)	FB-NTC Price (%)
DK1	43.72	47.23	-3.51	-7.44
DK2	47.96	49.29	-1.33	-2.69
FI	43.27	39.86	3.41	8.56
NO1	46.83	46.60	0.23	0.49
NO2	44.67	46.26	-1.59	-3.43
NO3	49.78	48.89	0.89	1.82
NO4	45.20	43.34	1.86	4.29
NO5	51.44	52.97	-1.53	-2.89
SE1	40.18	36.86	3.32	9.02
SE2	40.11	36.98	3.13	8.46
SE3	40.63	36.99	3.65	9.86
SE4	44.16	42.36	1.81	4.26

## Nordic Prices – Duration Curve (€/MWh)

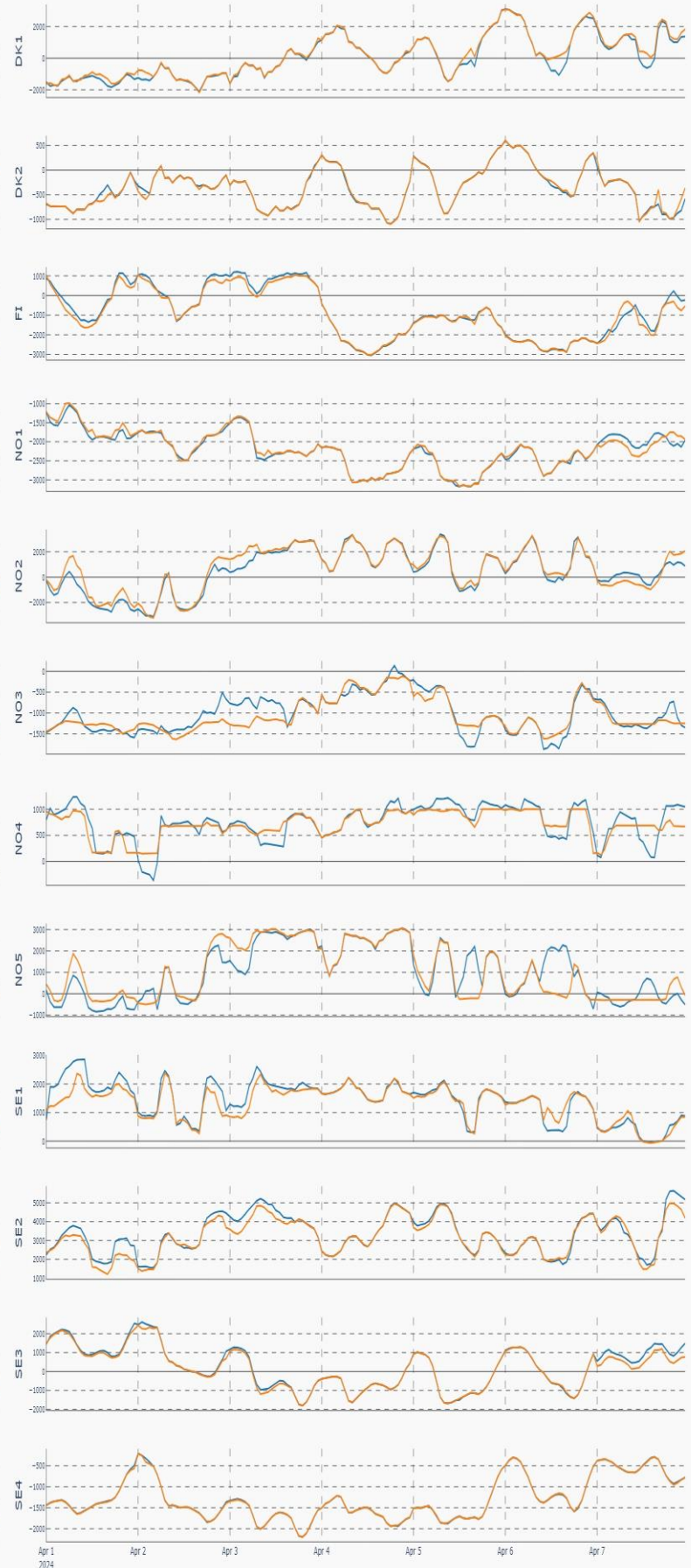
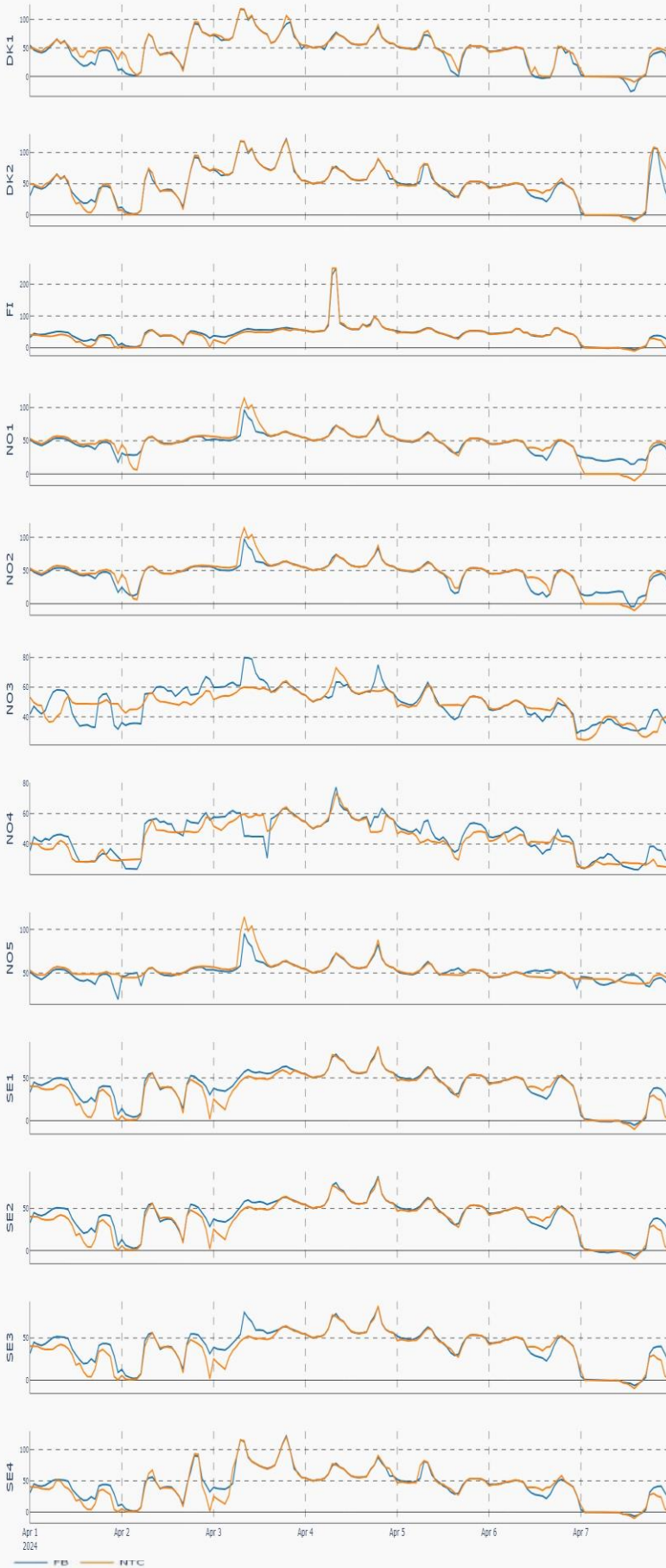


## Nordic Net Position



## Nordic Price per Bidding Zone (€/MWh)

## Nordic Net Position per Bidding Zone



Apr 1 2024 Apr 2 Apr 3 Apr 4 Apr 5 Apr 6 Apr 7

Apr 1 2024 Apr 2 Apr 3 Apr 4 Apr 5 Apr 6 Apr 7

— FB — NTC