

# Nordic CCM Market Report: 2024 Week 17

\*For more information on the EPR and other published data consult the EPR Handbook

## General Remark

This week sees an overall change for the Nordic CCR of 0.84 M€, a change of -0.25 M€ on the Hansa/Baltic border, and a change of 0.13 M€ for the external areas, resulting in a change of 0.71 M€ for the entire SDAC area.

For five days of the week the total SEW change is positive and the distribution of the welfare change between consumer surplus, producer surplus and congestion income varies between the days. On country level, Denmark, Finland and Norway get a positive welfare change with FB compared to NTC while the total SEW change for Sweden is negative.

The average prices are decreased in all Danish, Finnish and Swedish bidding zones, and increased by a few percent in the Norwegian bidding zones.

## Data Quality

|                  | 22/04<br>Mon | 23/04<br>Tue | 24/04<br>Wed | 25/04<br>Thu | 26/04<br>Fri | 27/04<br>Sat | 28/04<br>Sun |
|------------------|--------------|--------------|--------------|--------------|--------------|--------------|--------------|
| Substituted IGMs | 0            | 0            | 0            | 0            | 0            | 0            | 0            |
| IVA Provision    | 0            | 0            | 2            | 0            | 1            | 0            | 1            |
| Accepted Domain  | 100%         | 100%         | 100%         | 100%         | 100%         | 100%         | 100%         |

\*IVAs can be viewed by viewed on JAO under validation reductions

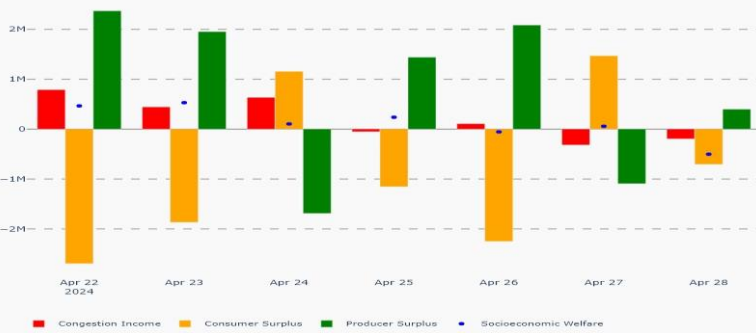
## Nordic Prices – Weekly Average

|     | FB Price<br>(€/MWh) | NTC Price<br>(€/MWh) | FB-NTC Price<br>(€/MWh) | FB-NTC Price<br>(%) |
|-----|---------------------|----------------------|-------------------------|---------------------|
| DK1 | 79.21               | 79.85                | -0.64                   | -0.80               |
| DK2 | 79.70               | 80.34                | -0.65                   | -0.81               |
| FI  | 76.00               | 76.44                | -0.44                   | -0.57               |
| NO1 | 73.15               | 67.82                | 5.34                    | 7.87                |
| NO2 | 72.53               | 67.07                | 5.46                    | 8.15                |
| NO3 | 70.39               | 68.93                | 1.46                    | 2.12                |
| NO4 | 65.69               | 63.31                | 2.38                    | 3.76                |
| NO5 | 72.48               | 70.38                | 2.10                    | 2.99                |
| SE1 | 65.70               | 69.21                | -3.52                   | -5.08               |
| SE2 | 66.58               | 69.87                | -3.29                   | -4.71               |
| SE3 | 80.22               | 81.13                | -0.91                   | -1.12               |
| SE4 | 78.81               | 79.19                | -0.39                   | -0.49               |

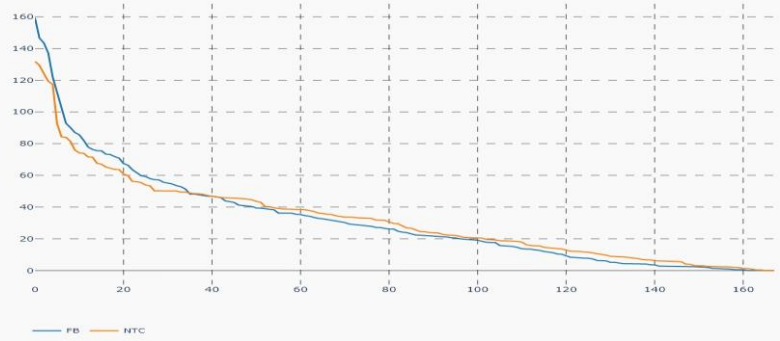
## Nordic CCR Socio-economic Welfare Result (M€)

|                   | DK    | NO    | SE    | FI    | Sum   |
|-------------------|-------|-------|-------|-------|-------|
| Congestion Income | 0.14  | 0.29  | 0.70  | 0.28  | 1.41  |
| Consumer Surplus  | 0.39  | -9.70 | 2.95  | 0.32  | -6.04 |
| Producer Surplus  | -0.31 | 11.74 | -5.44 | -0.52 | 5.47  |
| Sum               | 0.23  | 2.33  | -1.79 | 0.08  | 0.84  |

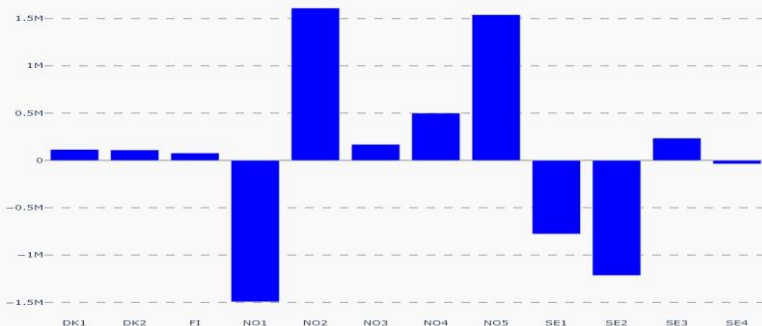
## Daily Nordic Socio-economic Welfare (M€)



## Nordic Prices – Duration Curve (€/MWh)



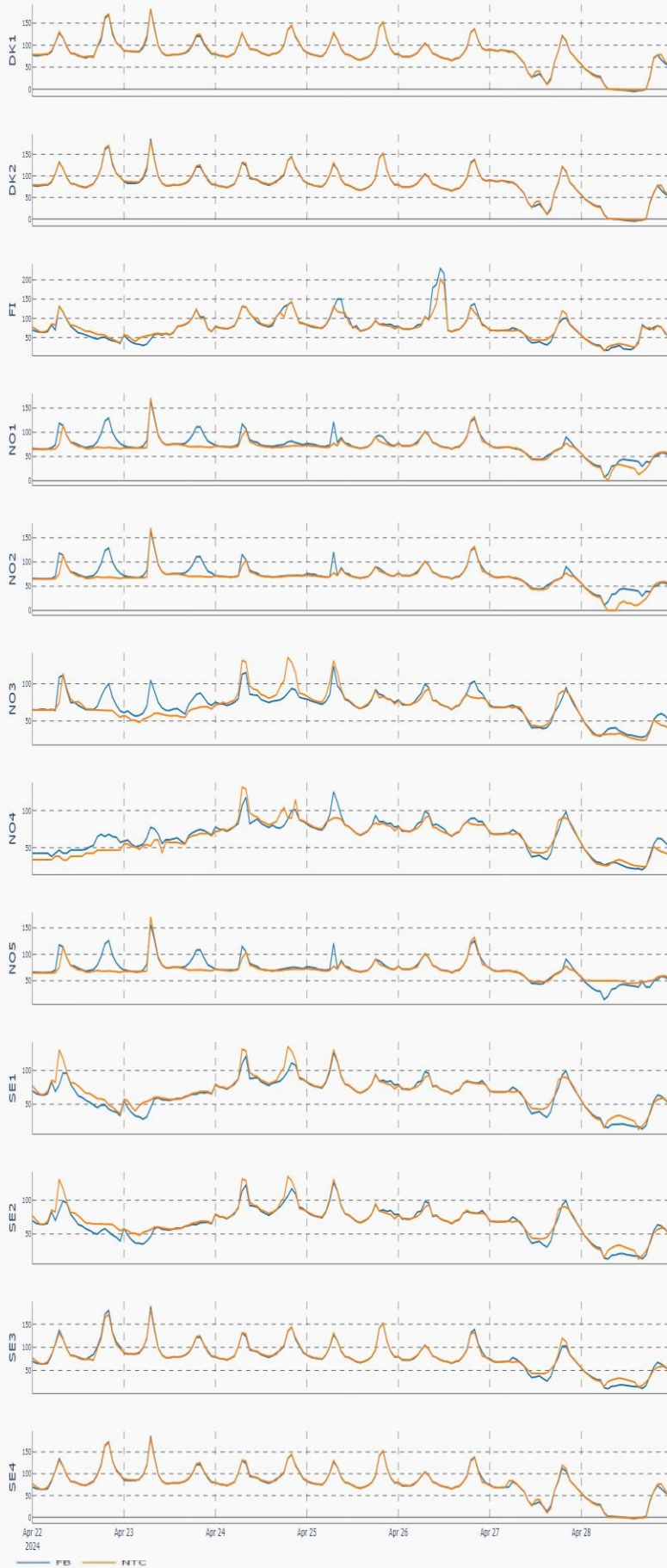
## Socio-economic Welfare change per Nordic BZ (M€)



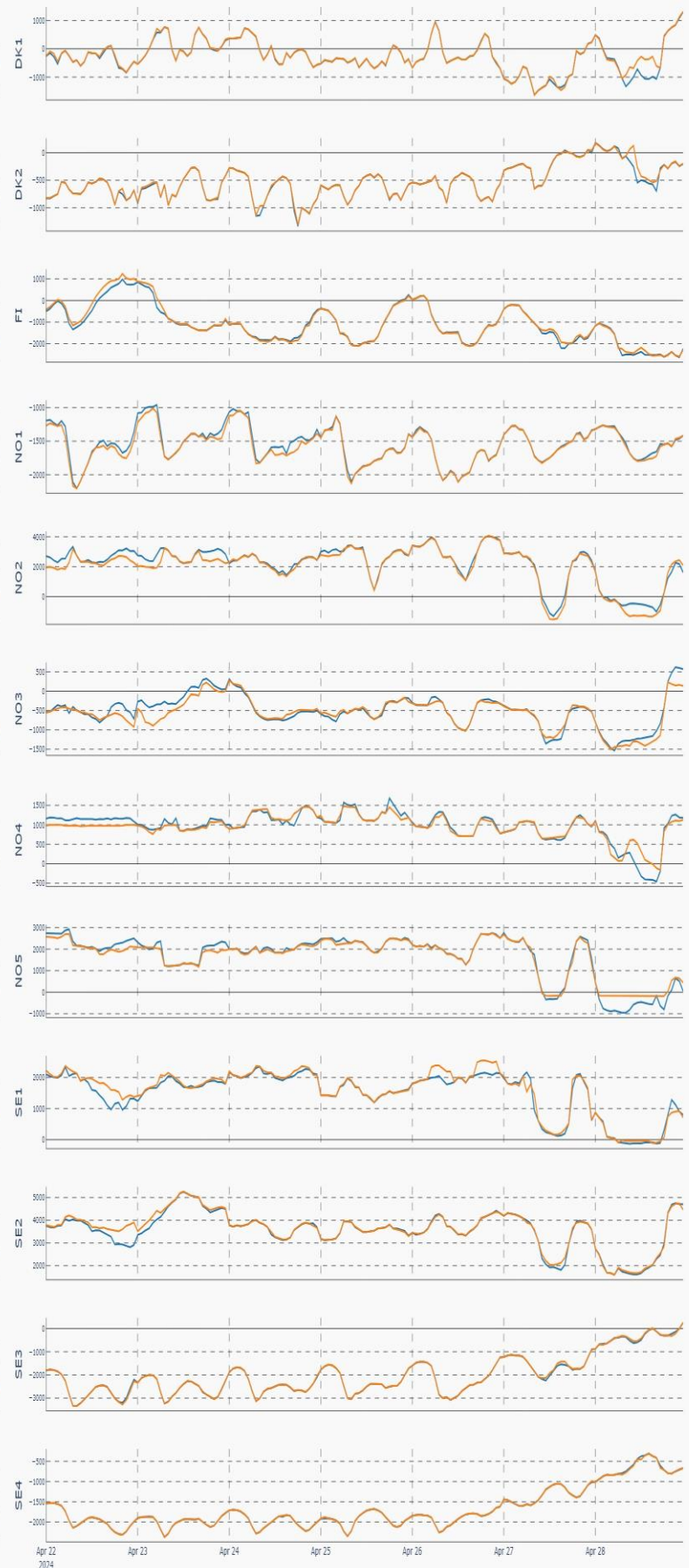
## Nordic Net Position



## Nordic Price per Bidding Zone (€/MWh)



## Nordic Net Position per Bidding Zone



— FB — NTC