

Nordic CCM Market Report: 2024 Week 18

*For more information on the EPR and other published data consult the EPR Handbook

General Remark

This week sees an overall change for the Nordic CCR of -1.10 M€, a change of 3.07 M€ on the Hansa/Baltic border, and a change of 1.00 M€ for the external areas, resulting in a change of 2.96 M€ for the entire SDAC area.

The SDAC socio-economic welfare has been positive in every day of week 18, with highest SEW seen on Saturday. The Nordic welfare change was negative on Friday as well as on Tuesday and Sunday due to decreasing congestion income. On country level, Denmark and Norway get a positive welfare change with FB compared to NTC while the total SEW change for Finland and Sweden is negative.

For the period from May 3rd to May 5th, the capacity between SE3 and FI was incorrectly limited to 700 MW in FB, when it should have been 900 MW, as in NTC. This issue will be further elaborated in the upcoming operational learning points document.

Nordic CCR Socio-economic Welfare Result (M€)

	DK	NO	SE	FI	Sum
Congestion Income	0.74	-0.51	-4.49	0.12	-4.14
Consumer Surplus	1.39	-0.90	-4.57	-3.71	-7.79
Producer Surplus	-1.47	1.58	8.16	2.57	10.83
Sum	0.66	0.16	-0.90	-1.03	-1.10

Daily Nordic Socio-economic Welfare (M€)



Socio-economic Welfare change per Nordic BZ (M€)



Data Quality

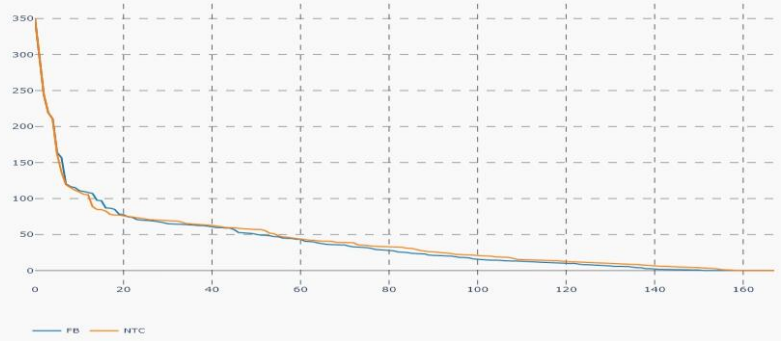
	29/04 Mon	30/04 Tue	01/05 Wed	02/05 Thu	03/05 Fri	04/05 Sat	05/05 Sun
Substituted IGMs	0	0	0	0	0	0	0
IVA Provision	0	0	0	0	0	0	0
Accepted Domain	100%	100%	100%	100%	100%	100%	100%

*IVAs can be viewed by viewed on JAO under validation reductions

Nordic Prices – Weekly Average

	FB Price (€/MWh)	NTC Price (€/MWh)	FB-NTC Price (€/MWh)	FB-NTC Price (%)
DK1	48.43	51.07	-2.64	-5.17
DK2	48.79	50.94	-2.15	-4.23
FI	54.71	51.08	3.63	7.12
NO1	35.26	35.06	0.19	0.54
NO2	36.56	38.09	-1.53	-4.01
NO3	35.74	32.18	3.56	11.08
NO4	34.81	32.18	2.63	8.19
NO5	35.90	37.54	-1.65	-4.39
SE1	32.54	30.41	2.13	6.99
SE2	32.47	30.41	2.05	6.75
SE3	37.31	32.25	5.06	15.68
SE4	37.49	46.14	-8.65	-18.74

Nordic Prices – Duration Curve (€/MWh)



Nordic Net Position



Nordic Price per Bidding Zone (€/MWh)

Nordic Net Position per Bidding Zone

