

# Nordic CCM Market Report: 2024 Week 19

\*For more information on the EPR and other published data consult the EPR Handbook

## General Remark

This week sees an overall change for the Nordic CCR of -0.68 M€, a change of 3.32 M€ on the Hansa/Baltic border, and a change of -0.00 M€ for the external areas, resulting in a change of 2.64 M€ for the entire SDAC area.

The SDAC socio-economic welfare change was positive with FB compared to NTC on every day of the week. The Nordic socio-economic welfare change was positive on Wednesday, Thursday and Friday. On country level, Denmark and Norway get positive welfare changes while the total SEW change for Finland and Sweden is negative.

## Data Quality

	06/05	07/05	08/05	09/05	10/05	11/05	12/05
	Mon	Tue	Wed	Thu	Fri	Sat	Sun
Substituted IGMs	0	0	0	0	0	0	0
IVA Provision	1	2	0	0	1	0	0
Accepted Domain	100%	100%	100%	100%	100%	100%	100%

\*IVAs can be viewed by viewed on JAO under validation reductions

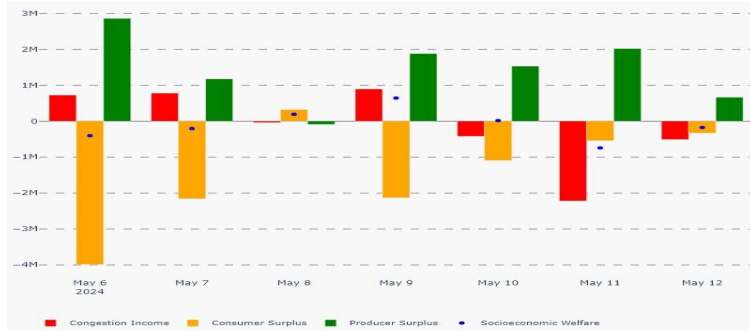
## Nordic Prices – Weekly Average

	FB Price (€/MWh)	NTC Price (€/MWh)	FB-NTC Price (€/MWh)	FB-NTC Price (%)
DK1	65.60	67.70	-2.10	-3.10
DK2	66.22	68.82	-2.59	-3.77
FI	46.59	46.57	0.03	0.06
NO1	41.93	45.44	-3.51	-7.73
NO2	47.43	51.43	-4.00	-7.78
NO3	34.34	27.45	6.89	25.10
NO4	30.35	27.42	2.93	10.67
NO5	42.48	45.48	-3.00	-6.59
SE1	24.22	23.57	0.65	2.76
SE2	24.47	23.57	0.90	3.82
SE3	47.12	36.82	10.30	27.97
SE4	47.75	52.46	-4.70	-8.96

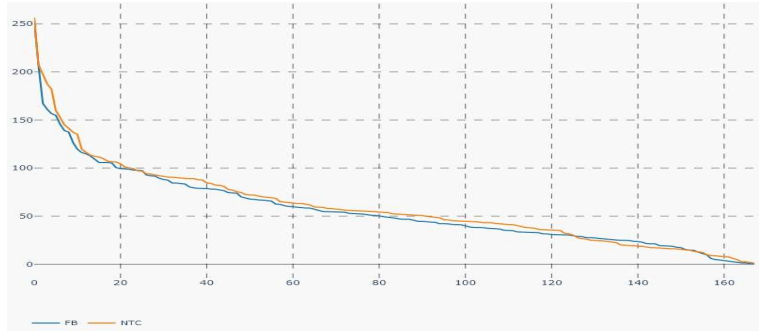
## Nordic CCR Socio-economic Welfare Result (M€)

	DK	NO	SE	FI	Sum
Congestion Income	0.44	1.79	-2.43	-0.59	-0.80
Consumer Surplus	1.23	1.02	-12.29	0.11	-9.92
Producer Surplus	-0.79	-2.42	13.24	0.00	10.03
Sum	0.88	0.39	-1.48	-0.48	-0.68

## Daily Nordic Socio-economic Welfare (M€)



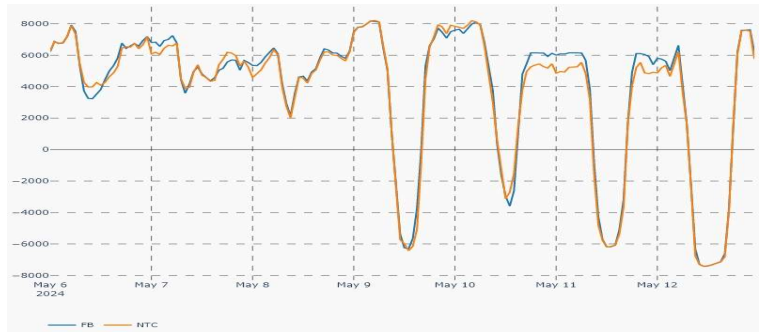
## Nordic Prices – Duration Curve (€/MWh)



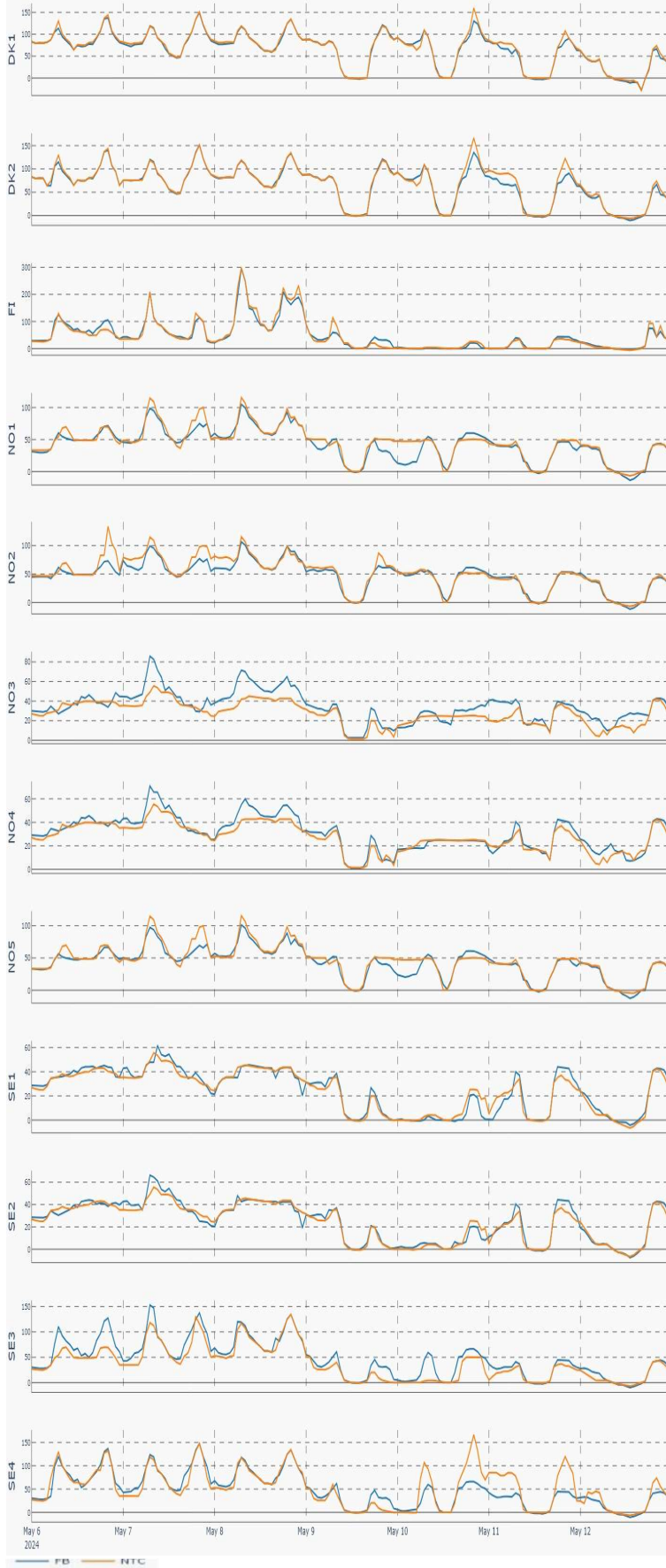
## Socio-economic Welfare change per Nordic BZ (M€)



## Nordic Net Position



## Nordic Price per Bidding Zone (€/MWh)



## Nordic Net Position per Bidding Zone

