

Nordic CCM Market Report: 2024 Week 20

*For more information on the EPR and other published data consult the EPR Handbook

General Remark

This week sees an overall socio-economic welfare change for the Nordic CCR of -1.71 M€, a change of 1.66 M€ on the Hansa/Baltic border, and a change of 0.18 M€ for the external areas, resulting in a change of 0.13 M€ for the entire SDAC area.

The negative SEW in the Nordic CCR results from the NTC solution being outside the FB domain. The DA NTC solution would have created overloads but is not considered in NTC as this solution is not expected in delivery due to changed net position in DK1 resulting from countertrading. This issue arises during this period due to maintenance on multiple elements on the west coast. Energinet is investigating whether and how this can be handled.

The high prices seen on Monday in FI were reduced substantially in FB due to a higher flow on SE1>FI being allowed. Due to an error in the FB input for MTU 19-23 on May 17th, 800 MW capacity was allocated on FI>SE3 when the capacity should have been zero.

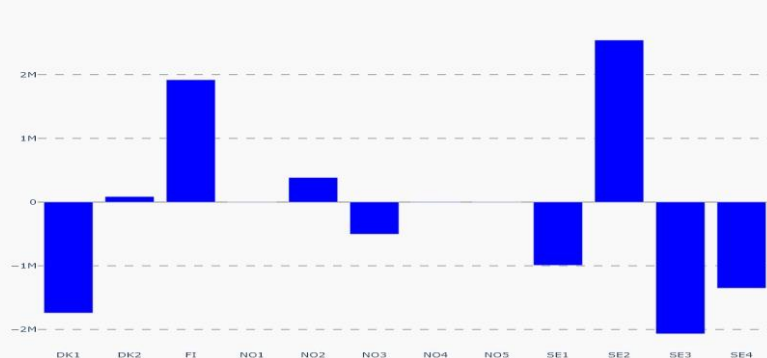
Nordic CCR Socio-economic Welfare Result (M€)

	DK	NO	SE	FI	Sum
Congestion Income	-0.13	0.07	-3.67	-2.12	-5.84
Consumer Surplus	1.81	-0.22	-5.84	12.73	8.49
Producer Surplus	-3.34	0.04	7.64	-8.70	-4.35
Sum	-1.65	-0.11	-1.87	1.92	-1.71

Daily Nordic Socio-economic Welfare (M€)



Socio-economic Welfare change per Nordic BZ (M€)



Data Quality

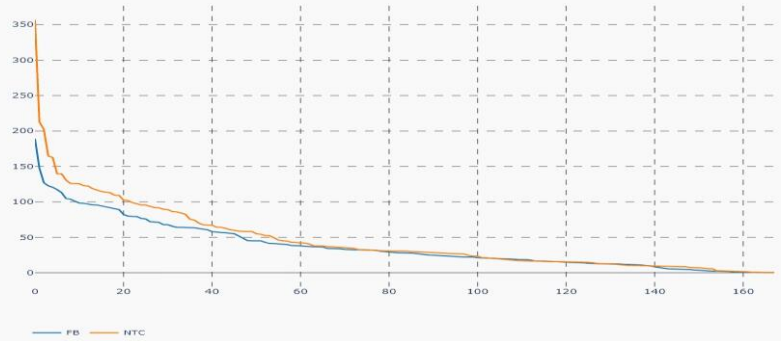
	13/05 Mon	14/05 Tue	15/05 Wed	16/05 Thu	17/05 Fri	18/05 Sat	19/05 Sun
Substituted IGMs	0	0	0	0	0	0	1
IVA Provision	2	3	0	1	0	1	1
Accepted Domain	100%	100%	100%	100%	100%	100%	100%

*IVAs can be viewed by viewed on JAO under validation reductions

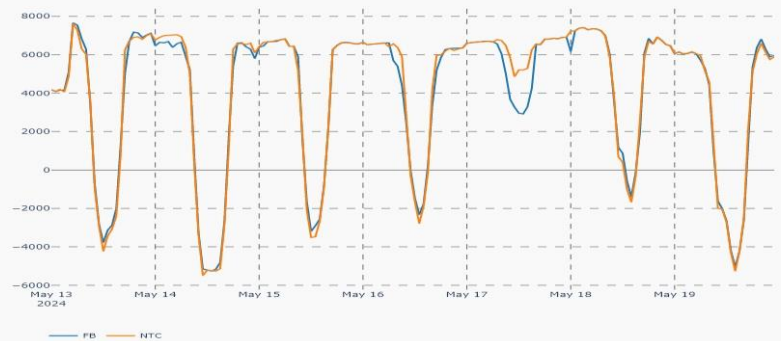
Nordic Prices – Weekly Average

	FB Price (€/MWh)	NTC Price (€/MWh)	FB-NTC Price (€/MWh)	FB-NTC Price (%)
DK1	22.71	30.19	-7.48	-24.78
DK2	30.19	26.91	3.28	12.20
FI	17.98	30.31	-12.33	-40.67
NO1	18.56	20.28	-1.72	-8.46
NO2	21.63	24.15	-2.52	-10.44
NO3	18.36	11.81	6.55	55.46
NO4	11.96	11.81	0.14	1.23
NO5	19.25	20.29	-1.04	-5.15
SE1	8.68	8.23	0.45	5.52
SE2	10.17	8.23	1.94	23.62
SE3	15.66	10.85	4.81	44.31
SE4	17.97	17.66	0.31	1.74

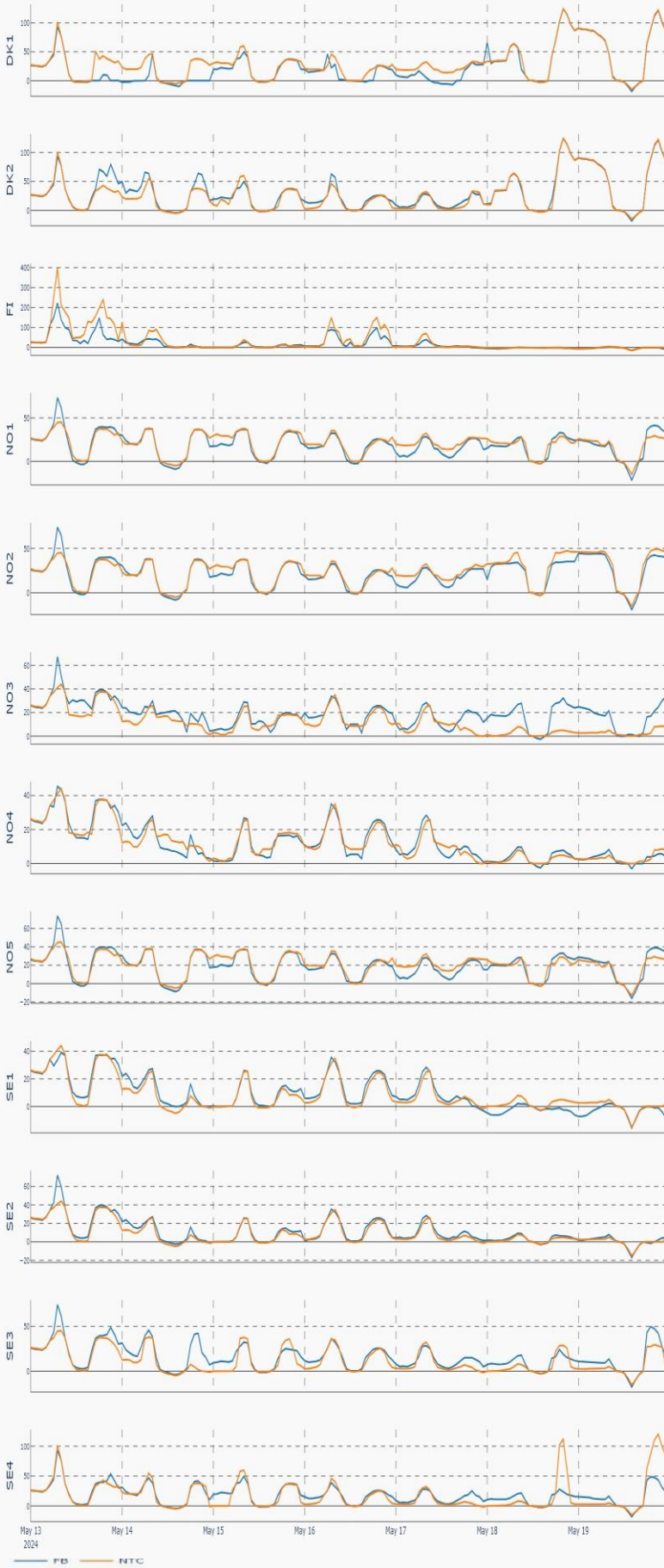
Nordic Prices – Duration Curve (€/MWh)



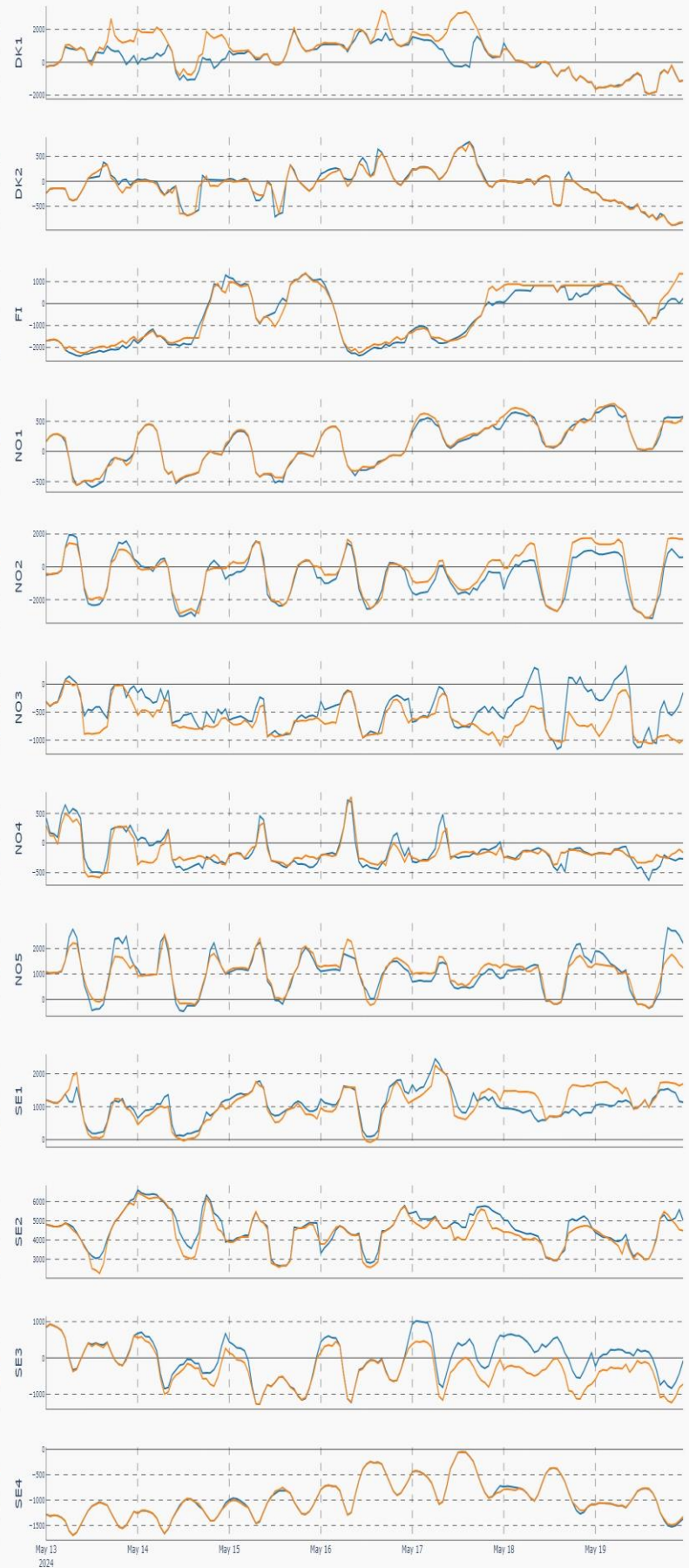
Nordic Net Position



Nordic Price per Bidding Zone (€/MWh)



Nordic Net Position per Bidding Zone



May 13 2024 May 14 May 15 May 16 May 17 May 18 May 19

FB NTC