

# Nordic CCM Market Report: 2024 Week 23

\*For more information on the EPR and other published data consult the EPR Handbook

## General Remark

This week sees an overall change for the Nordic CCR of -10.74 M€, a change of 12.45 M€ on the Hansa/Baltic border, and a change of -1.07 M€ for the external areas, resulting in a change of 0.64 M€ for the entire SDAC area.

The negative SEW change for Nordic CCR is primarily due to the shift of internal congestion income in the Nordics to the congestion income at the Hansa borders. This is the result of increasing flows from north to south within the Nordic region. Consequently, this leads to reduced price differences within the Nordics and shifts the price differences to the Hansa borders.

## Data Quality

	03/06 Mon	04/06 Tue	05/06 Wed	06/06 Thu	07/06 Fri	08/06 Sat	09/06 Sun
Substituted IGMs	0	0	0	0	0	0	0
IVA Provision	0	0	0	0	0	0	0
Accepted Domain	100%	100%	100%	100%	100%	100%	100%

\*IVAs can be viewed by viewed on JAO under validation reductions

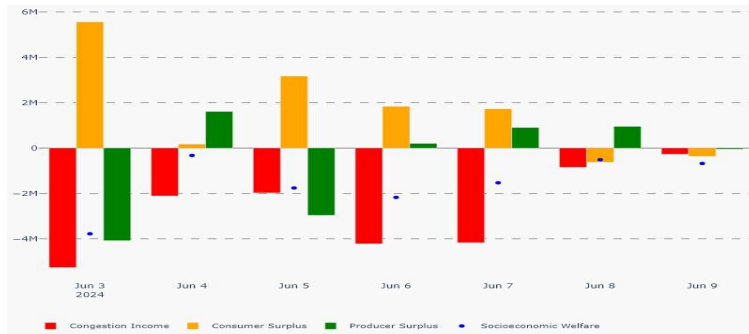
## Nordic Prices – Weekly Average

	FB Price (€/MWh)	NTC Price (€/MWh)	FB-NTC Price (€/MWh)	FB-NTC Price (%)
DK1	39.60	60.49	-20.89	-34.54
DK2	69.99	66.34	3.65	5.50
FI	42.48	44.22	-1.73	-3.92
NO1	24.33	33.08	-8.75	-26.45
NO2	34.07	41.41	-7.33	-17.71
NO3	21.63	15.21	6.42	42.20
NO4	21.81	15.21	6.60	43.40
NO5	27.37	34.81	-7.44	-21.38
SE1	19.06	12.54	6.52	51.97
SE2	18.61	12.54	6.07	48.41
SE3	21.55	14.10	7.45	52.81
SE4	26.43	54.90	-28.46	-51.85

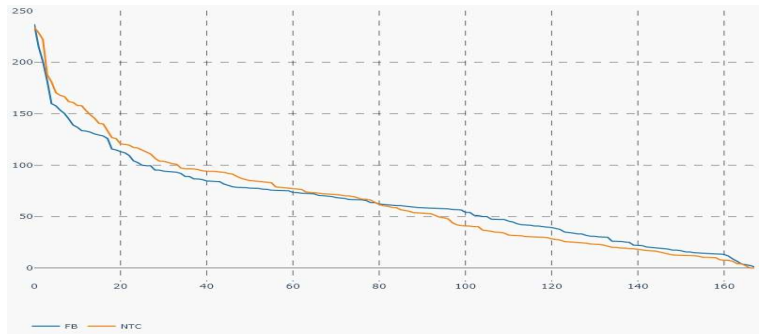
## Nordic CCR Socio-economic Welfare Result (M€)

	DK	NO	SE	FI	Sum
Congestion Income	2.06	0.45	-20.12	-1.22	-18.83
Consumer Surplus	6.08	6.21	-2.79	2.00	11.50
Producer Surplus	-8.56	-8.45	14.80	-1.20	-3.41
Sum	-0.42	-1.79	-8.10	-0.43	-10.74

## Daily Nordic Socio-economic Welfare (M€)



## Nordic Prices – Duration Curve (€/MWh)



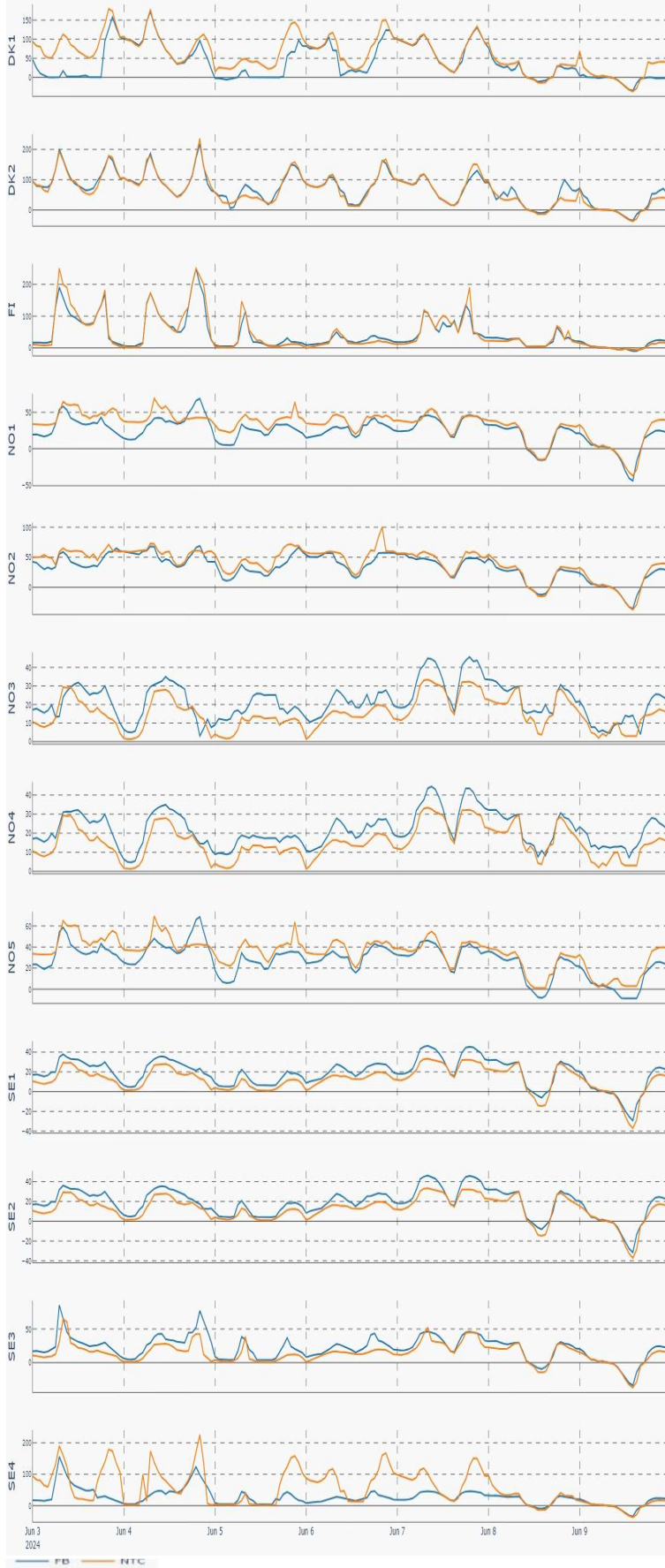
## Socio-economic Welfare change per Nordic BZ (M€)



## Nordic Net Position



Nordic Price per Bidding Zone (€/MWh)



Nordic Net Position per Bidding Zone

