

Nordic CCM Market Report: 2024 Week 29

*For more information on the EPR and other published data consult the EPR Handbook

General Remark

This week sees an overall change for the Nordic CCR of -1.84 M€, a change of 3.40 M€ on the Hansa/Baltic border, and a change of -0.25 M€ for the external areas, resulting in a change of 1.31 M€ for the entire SDAC area.

The negative SEW for the Nordic CCR, is mainly due to the congestion income moving from internal congestion income in the Nordics to the congestion income at the Hansa borders.

Data Quality

	15/07	16/07	17/07	18/07	19/07	20/07	21/07
	Mon	Tue	Wed	Thu	Fri	Sat	Sun
Substituted IGMs	0	0	0	0	0	0	0
IVA Provision	1	0	0	0	1	1	0
Accepted Domain	100%	100%	100%	100%	100%	100%	100%

*IVAs can be viewed by viewed on JAO under validation reductions

Nordic Prices – Weekly Average

	FB Price (€/MWh)	NTC Price (€/MWh)	FB-NTC Price (€/MWh)	FB-NTC Price (%)
DK1	66.08	66.65	-0.57	-0.86
DK2	67.72	67.11	0.61	0.91
FI	18.81	16.82	1.99	11.84
NO1	21.70	25.19	-3.49	-13.84
NO2	30.93	33.63	-2.70	-8.03
NO3	25.84	22.13	3.71	16.76
NO4	26.91	22.28	4.64	20.82
NO5	23.53	25.63	-2.10	-8.20
SE1	19.15	18.30	0.84	4.61
SE2	18.57	18.30	0.27	1.48
SE3	19.21	18.30	0.90	4.94
SE4	30.08	37.56	-7.48	-19.91

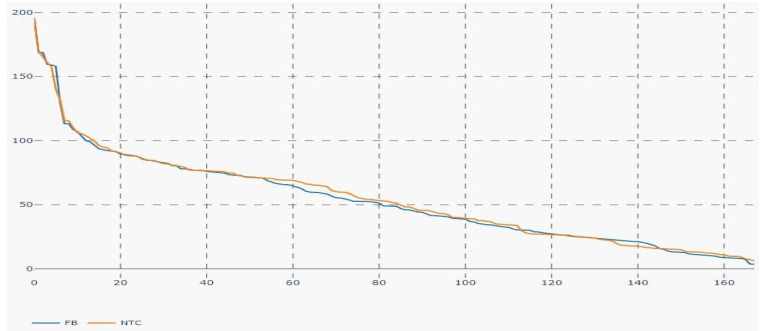
Nordic CCR Socio-economic Welfare Result (M€)

	DK	NO	SE	FI	Sum
Congestion Income	0.66	1.46	-4.63	-0.02	-2.53
Consumer Surplus	0.05	0.93	0.85	-1.58	0.25
Producer Surplus	-0.10	-2.32	0.97	1.89	0.43
Sum	0.61	0.07	-2.81	0.29	-1.84

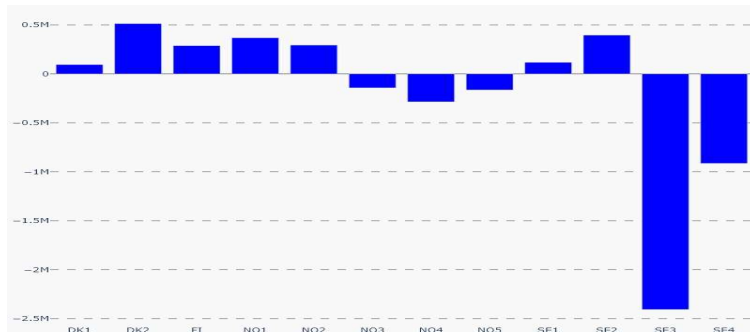
Daily Nordic Socio-economic Welfare (M€)



Nordic Prices – Duration Curve (€/MWh)



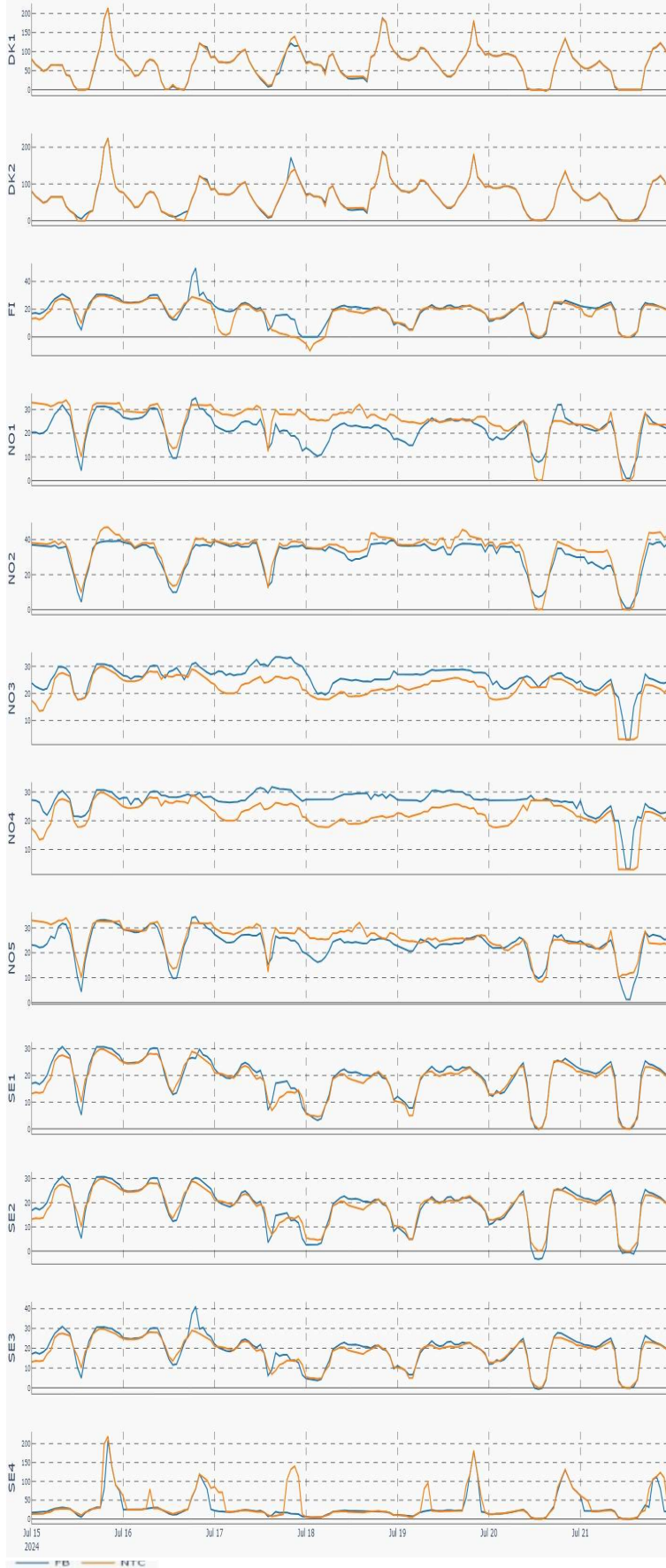
Socio-economic Welfare change per Nordic BZ (M€)



Nordic Net Position



Nordic Price per Bidding Zone (€/MWh)



Nordic Net Position per Bidding Zone

